

VISUAL STORY

**WHAT TO EXPECT WHEN YOU
VISIT OUR THEATRE**

**MARLOWE
THEATRE**

This visual story will help prepare you for your visit to the Marlowe Theatre and to help you become familiar with the surroundings and situation. Please use these notes as little or as much as you need to prepare for your visit. We hope you have a lovely time at the Marlowe Theatre!

Our theatre is located on The Friars.



You can also get to our building from Victoria Walk.



Or by walking across the bridge from Orange Street.



You will go through some doors to enter our foyer (foy-ay).



You can press this button to open the doors.



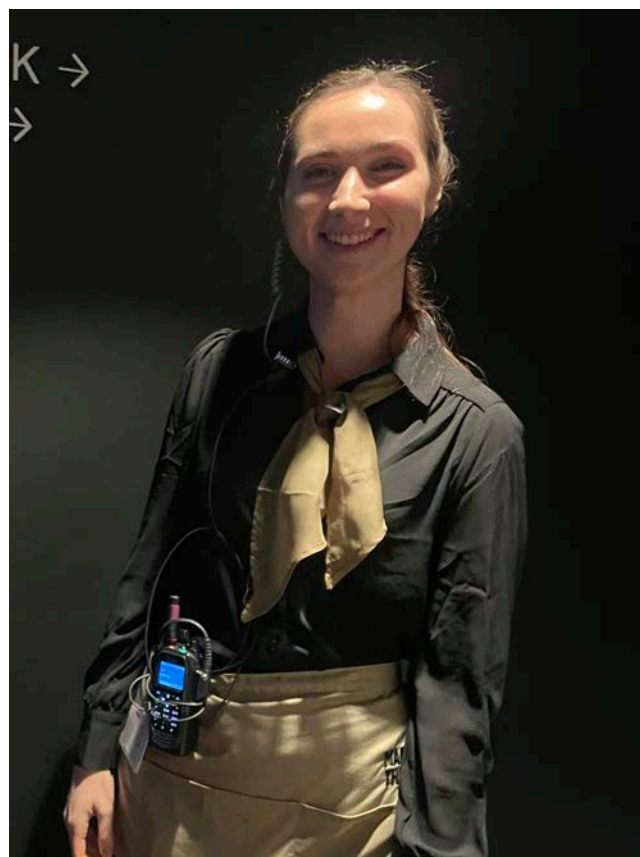
This is the foyer. A foyer is a space where you can sit before the show begins. You will also find our Box Office and Green Room cafe here.



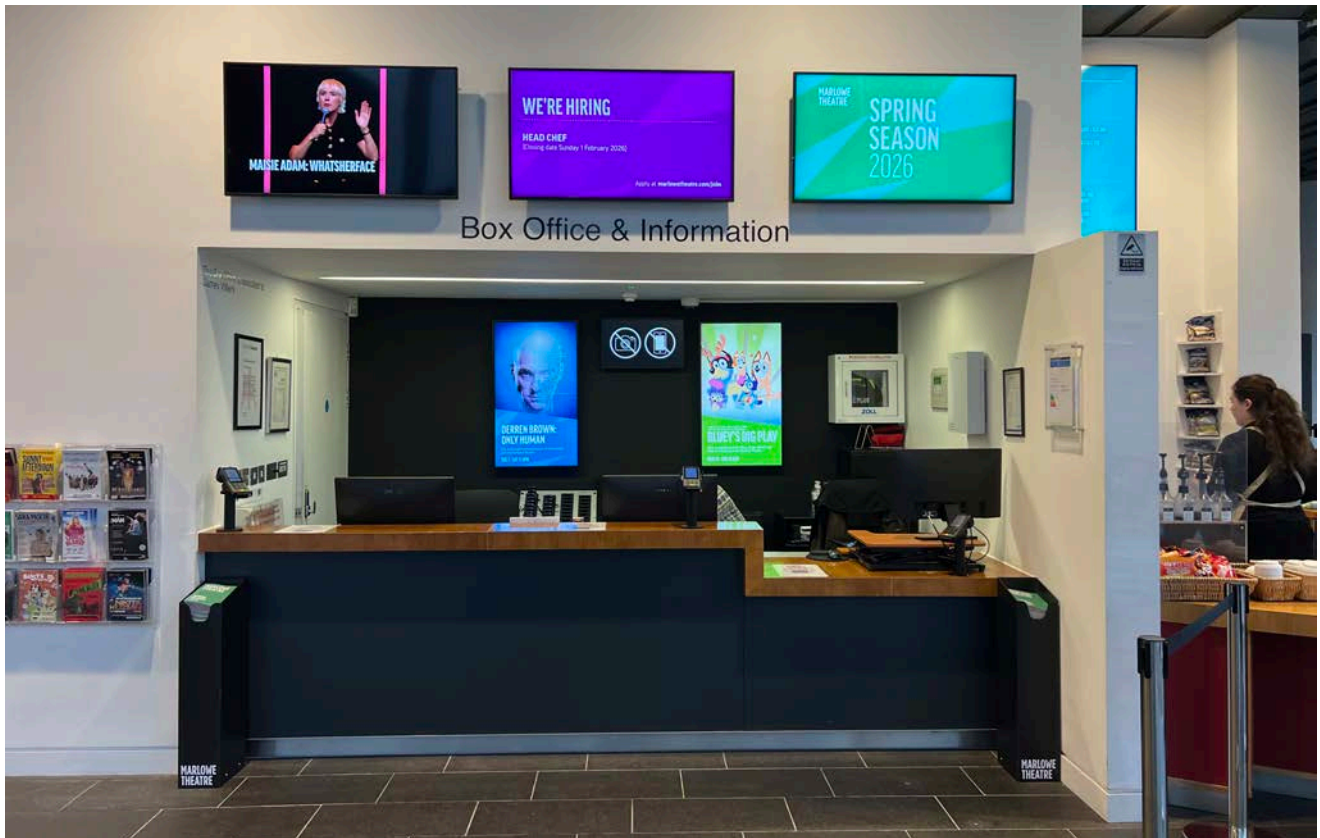
When you arrive, the foyer may be quite loud and busy.



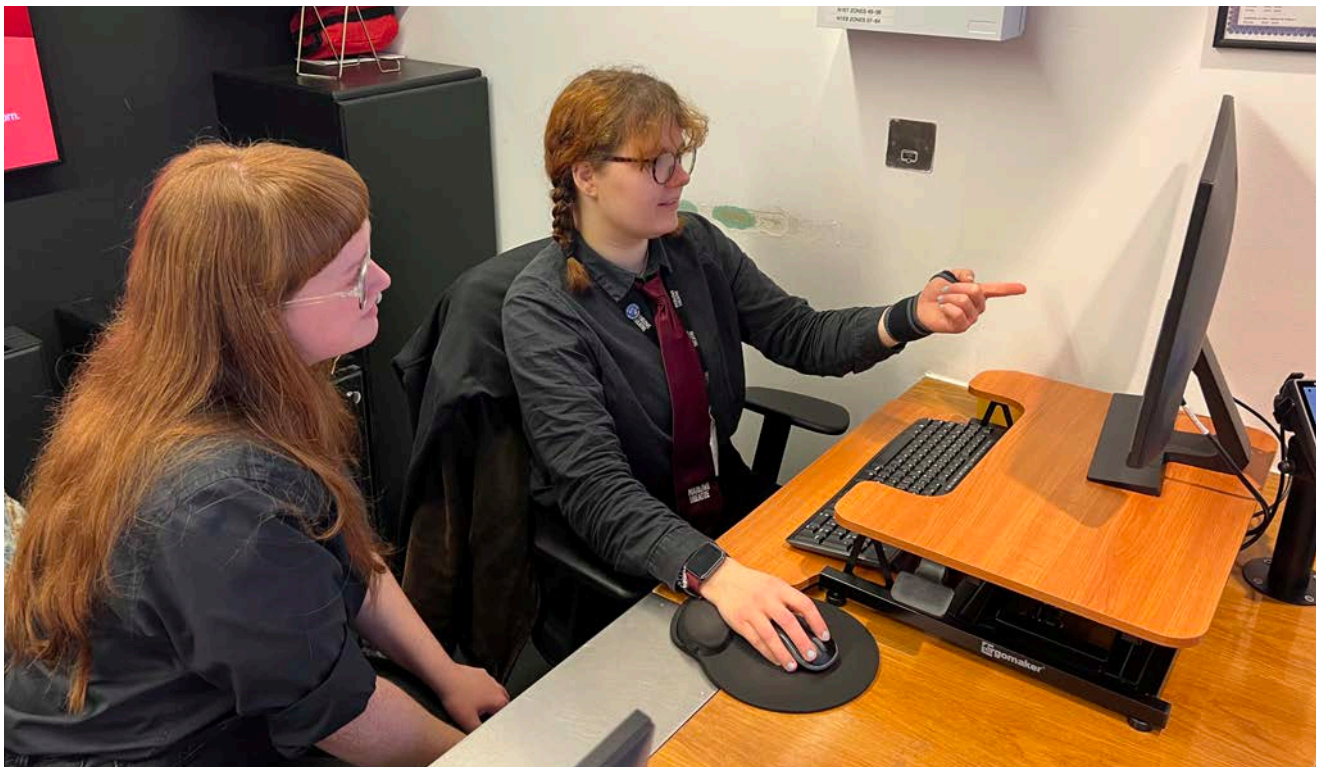
In our theatre we have members of staff around the building who are here to help you. They are called ushers.



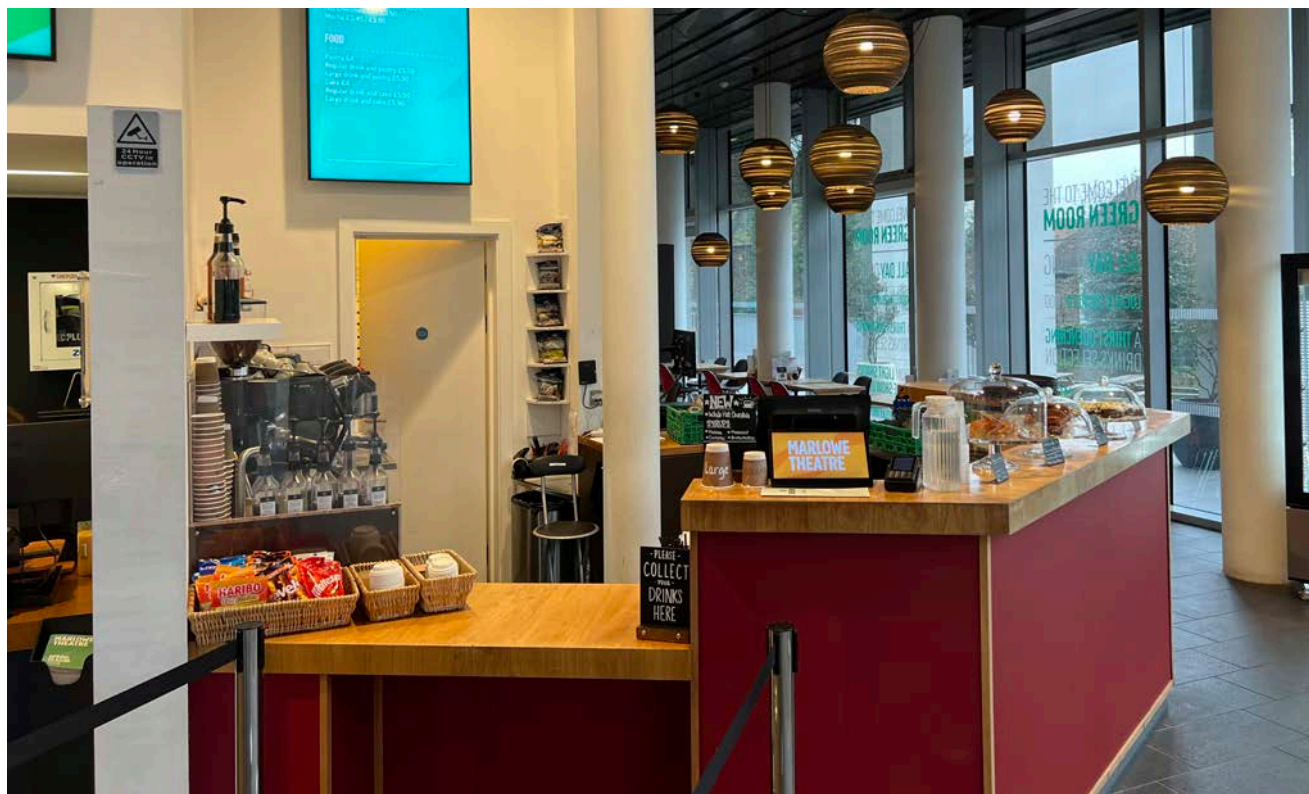
This is our Box Office counter, where you can collect or buy tickets, or ask any questions if you need support.



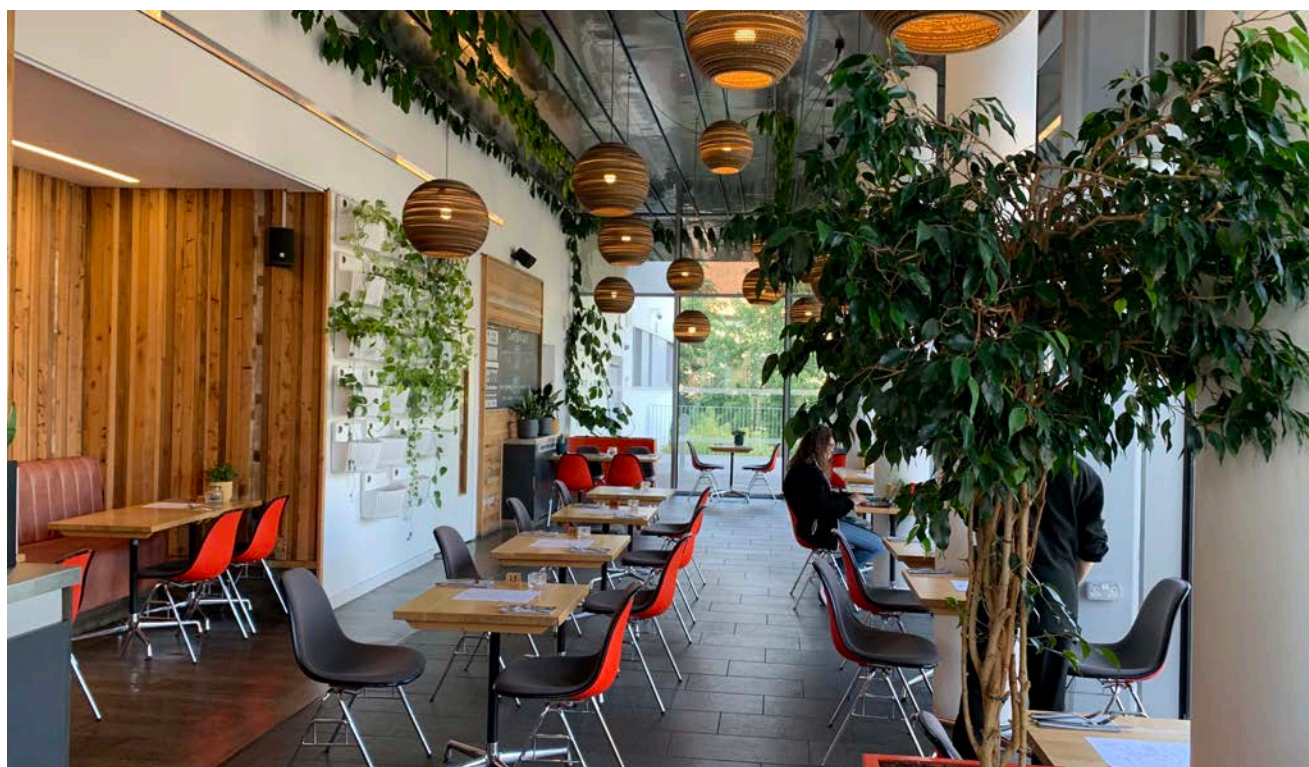
Our Box Office staff are very friendly and happy to help with any questions you may have. If you already have your tickets, you do not need to visit our Box Office counter.



Next to the Box Office counter is The Green Room. This is our restaurant, you can book a table in advance or get food and drink here on the day.



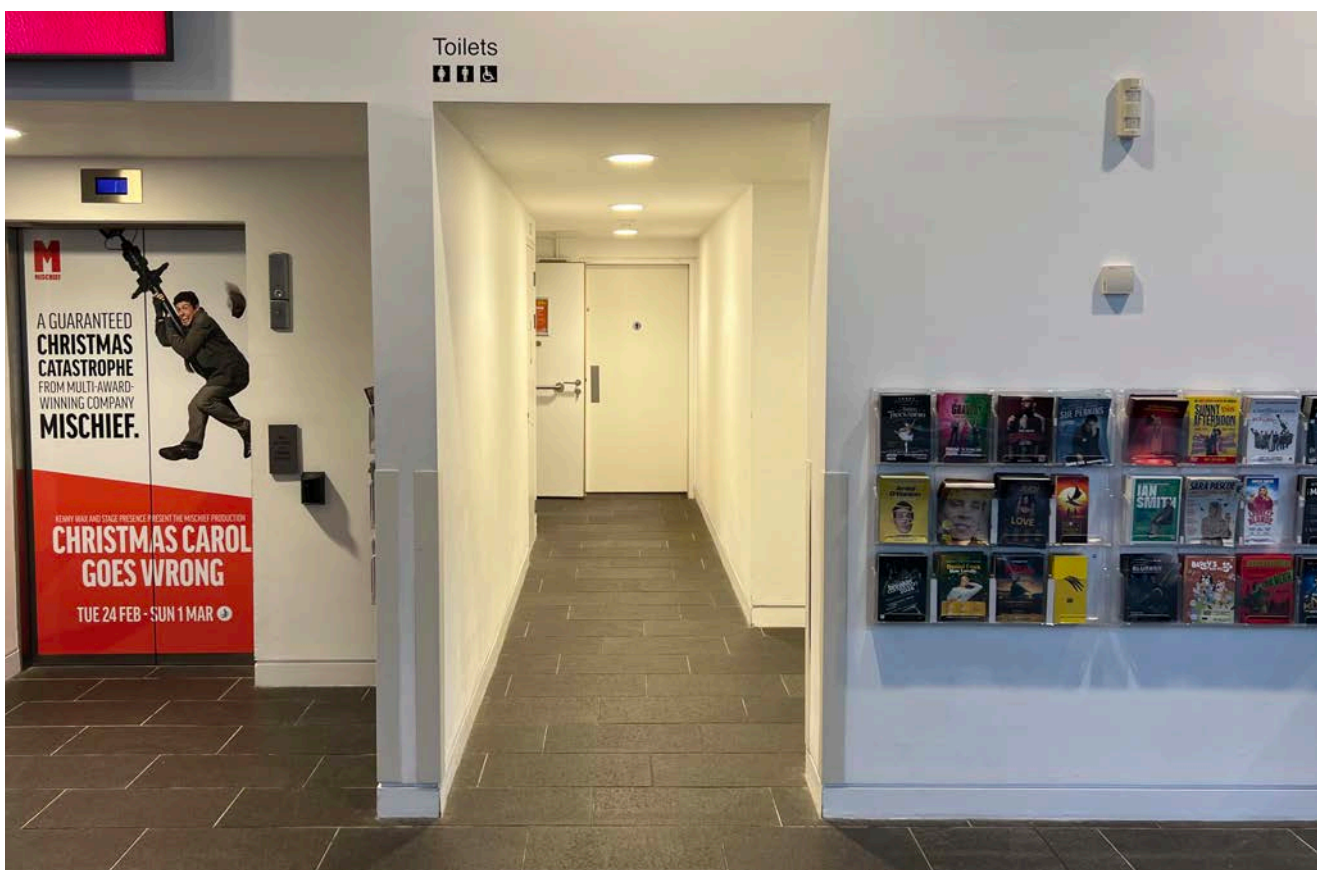
There might be queues as people wait to be served. You may also hear the coffee grinder here, which can make a loud noise.



There are accessible toilets on all levels of the theatre, and these signs will show you where they are.



On the ground floor the toilets are to the left of the Box Office counter. There are hand driers in all our toilets, these can be noisy.



In the foyer you will also find the foyer bar. It can get very busy and you may also find queues.



Our theatre has three different levels. These are the Stalls, located on the ground floor.



This is the Circle, located on the first floor.



This is the Upper Circle, located on the second floor.



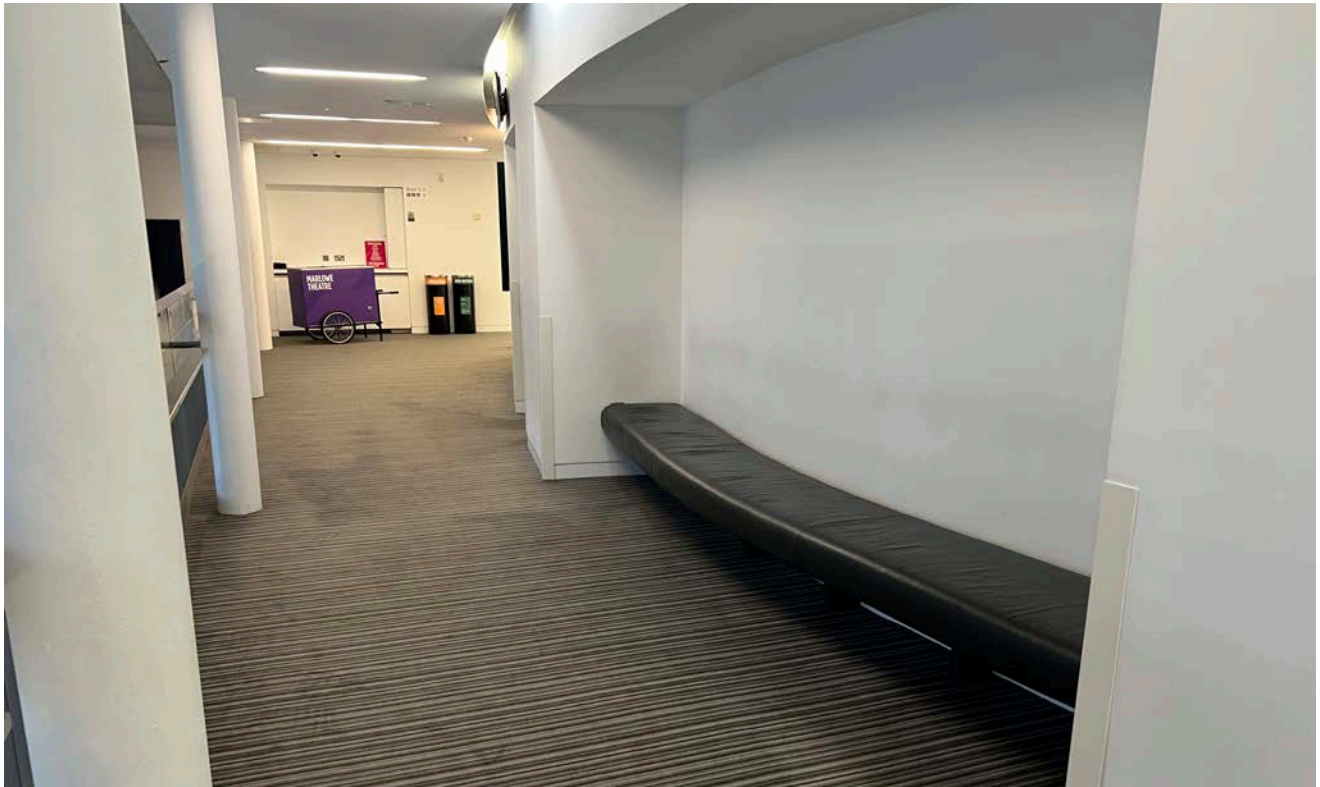
To access any level in the building you can use the stairs or the lift.



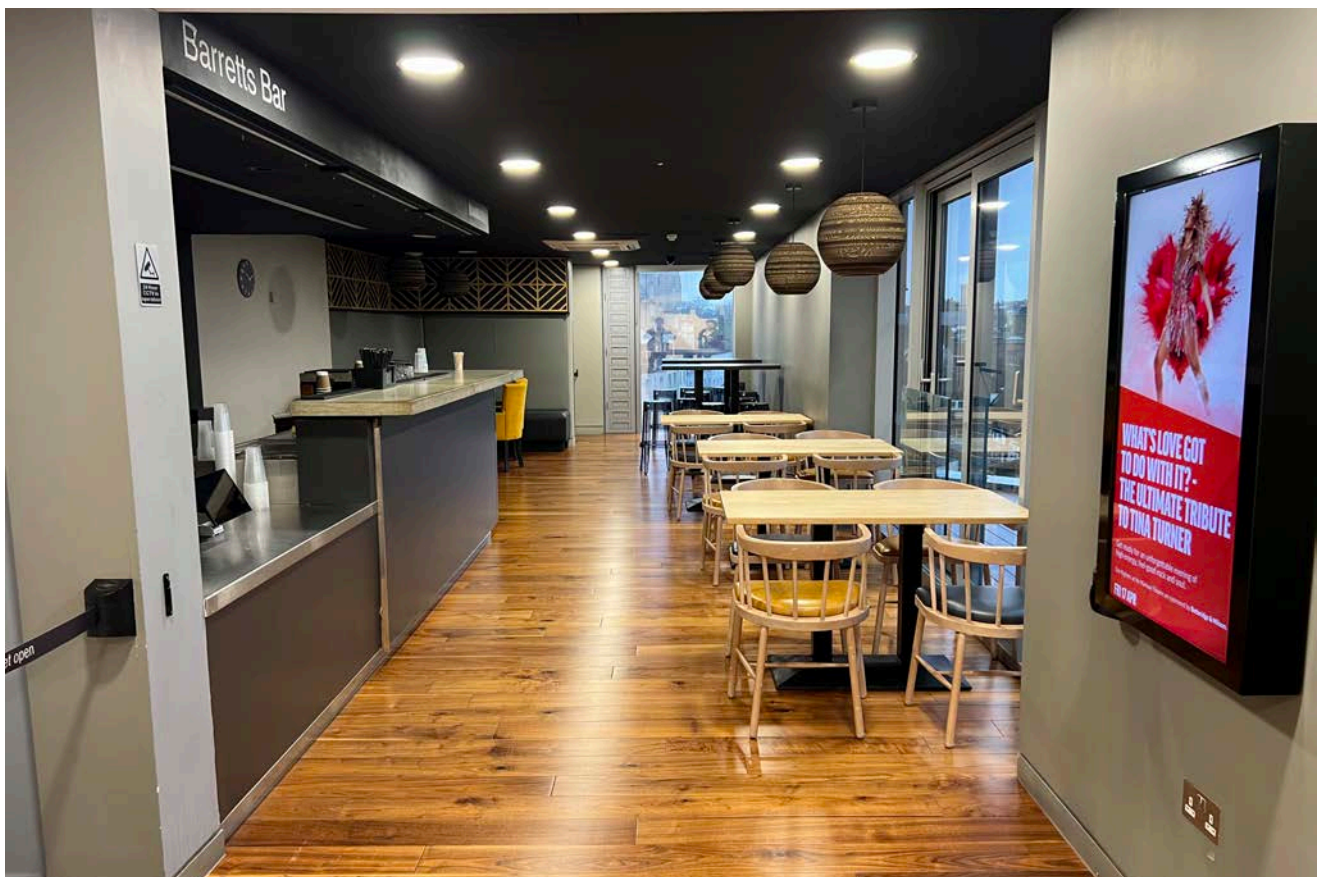
Our first floor is the Circle level. Here you can find the Crown Bar and the Studio.



There is also a small chill out zone where you can sit down on this level.



On the Upper Circle level, you will find the Barretts Bar.



There is also a small chill out zone where you can sit down on this level.



The inside of the theatre where you will watch the show is called the auditorium. To get there, you will go through doors like this.



The doors will lead you down a small corridor until you are greeted by an usher, who will check your ticket and welcome you in.



The auditorium is very large with a lot of seats. There will be lots of other people in there so it will be noisy. If you are at a Relaxed Performance, the lights will be kept on and you are free to walk in and out as much as you like. If you are not at a Relaxed Performance, the auditorium will get dark before the show starts, people will stop talking, and the ushers will close the doors.



During the show, feel free to join in with any laughing, clapping and cheering, but please remember you are not allowed to take photos, videos or phone calls.



For some shows, there is an interval. This is a pause mid-way through the performance. It is a chance for you to go to the toilet, get a drink, relax, or get some air.



After the interval you will go back into the auditorium. It will get darker and quiet again so you can watch the rest of the show.

At the end of the show, everyone will clap when all the actors come onto the stage, some people may stand up and cheer to show how much they liked the show.



After the show is over, if you are in the Circle or Upper Circle you will leave the theatre by coming down the stairs or down in the lift into the foyer. If you are in the Stalls you will go out through the foyer.

At the end of the performance, people will get up and leave the building. There may be queues for the lifts, stairs, or exits. If you would like, you can sit and wait in your seat as you don't have to leave straight away.

