

# MARLOWE THEATRE

SUMMER  
SEASON  
2025



MAPA Students perform *Out of the Ordinary* by Alecky Blythe. Photo by Josslyn Ryder.



One of our Technical Apprentices in action. Photo by David Oxberry.

# WELCOME TO OUR SUMMER SEASON

We're delighted to share a programme packed full of drama, comedy, dance, music and opera.

This season we're proud to announce the Marlowe Theatre's first ever home-produced large-scale production, Amy Rosenthal's brilliant new play *The Party Girls* – the sensational story of the Mitford sisters – which will premiere here at the Marlowe Theatre before embarking on a UK tour. It's part of our commitment to create world class theatre in Kent.

In our strongest ever season of drama, we also have the National Theatre's smash hit state-of-the-nation play *Dear England*, the Royal Shakespeare Company returning with Rupert Goold's *Hamlet* and Jodie Comer reprising her award-winning role in *Prima Facie*. Comedy is well-served with *Fawlty Towers the Play* and Mischief's *Christmas Carol Goes Wrong* and classic adaptations include Aaron Sorkin's Broadway hit *To Kill a Mockingbird* and Ken Ludwig's version of Agatha Christie's *Death on the Nile*. Musical highlights include Regent Park Theatre's beautiful production of *Fiddler on the Roof* and Irving Berlin's tap-dancing classic, *Top Hat*.

This summer our first students will graduate from the Marlowe Academy of Performing Arts, our collaboration with East Kent College Group. And congratulations to our first two Technical Apprentices, Lou and Alex, on completing their courses. We believe in investing in the next generation of theatre-makers in Kent and can't wait to see what these talented young people do next.

I hope to see you soon at the Marlowe Theatre, for a great season of theatre-going.



**Deborah Shaw**  
Chief Executive



# MARLOWE THEATRE MEMBERS GET MORE!

JOIN NOW  
FOR AS LITTLE AS £41

**Become a member** to receive exclusive benefits and get closer to the action.



## **Book it first with priority booking**

Be the first to hear when new shows go on sale, and book before the general public for most shows.



## **Get the best prices**

Priority access to the best priced tickets.



## **Unlock member discounts**

Discounts on most shows; 10% off in the priority period and 5% off at other times.

# BIG SAVINGS WITH OUR MULTI-BUY OFFER



**Save up to 20%** when you book three or more shows together from the front section of this brochure (page 7-44).

Book online, by phone or in person. Scan the QR code to browse our multi-buy shows:



For full terms and conditions visit [marlowetheatre.com/terms-and-conditions](https://marlowetheatre.com/terms-and-conditions)



COMING SOON

# NEW WRITING FESTIVAL

FRI 25-SUN 27 JUL 2025

The Marlowe Theatre celebrates new writing and regional talent with a festival of new plays, rehearsed readings, writing workshops and talks, across both of our theatre spaces.

Full line-up and schedule of events to be announced soon.



## LIVE AT THE MARLOWE

**Your chance to see top TV comics alongside the cream of the UK's emerging comedy talent.**

Our hugely popular night of live comedy is back, featuring some of the country's biggest stars of the future.

Our April show will have a headline set from comedian, presenter, screenwriter, and director Simon Amstell. Regularly performing at festivals and comedy clubs across the UK with sell-out tours, Simon was the youngest finalist of the BBC New Comedy Awards and has since won an RTS Award, a Broadcast Award, two British Comedy Awards and has been nominated for a BAFTA. Keep an eye on our website and socials for news of future line-ups.

Please note that line-ups are subject to change.

SAT 26 APR, FRI 20 JUN,  
SAT 26 JUL & THU 20 NOV 2025

MAIN HOUSE

Evenings 7.30pm

From £17

Discounts (selected performances)



Marlowe members



Discovery Tickets



**Content guidance**

May contain adult themes and language

Comedy at the Marlowe Theatre  
is sponsored by



**Members get more.** Join today for priority booking and exclusive discounts.  
Visit [marlowetheatre.com/memberships](https://marlowetheatre.com/memberships) or call 01227 787787





# ENGLISH TOURING OPERA

A season inspired by Shakespeare

## BELLINI'S THE CAPULETS AND THE MONTAGUES

Set in 1970s Little Italy, this brand-new production of Bellini's *I Capuleti e i Montecchi* is a powerful re-working of Shakespeare's *Romeo and Juliet*.

Director Eloise Lally evokes Italian American New York, the mafia and the cinematic influence of Martin Scorsese in this new production of Bellini's bel canto masterpiece.

WED 23 APR 2025  
MAIN HOUSE

7.30pm

From £17

### Discounts



Marlowe members



Discovery Tickets



Groups



Schools



**Content guidance**  
Recommended 12yrs+



**Pre-show talk**  
Wed 23 Apr 6.30pm



### THE VANISHING FOREST

MON 21 APR 2025

STUDIO

This family opera is part of English Touring Opera's response to climate change following last year's production of *The Great Stink*.

It's been a while since *A Midsummer Night's Dream* and Athens is changing. The forest is being chopped down, and as each tree vanishes, more magic disappears from the land.

*The Vanishing Forest* follows the events of *A Midsummer Night's Dream* as Puck joins forces with Cassie and Mylas, children of Duke Theseus and Hippolyta, to educate and inspire children on the issue of deforestation with Shakespearean-infused song, puppetry and adventure.

11am & 2pm

£10

### Discounts



Marlowe members



Discovery Tickets



Groups



**Content guidance**  
Recommended 7-11yrs

Please note this show is not part of the Multi-Buy offer.

### SHAKESPEARE SONGS: WHAT DREAMS MAY COME

TUE 22 APR 2025

STUDIO

An intimate performance of Shakespeare-inspired songs.

This intimate recital brings together Shakespeare's sonnets and songs in settings by composers including Purcell, Berlioz, Gerald Finzi and Madeleine Dring.

7.30pm

£20.50

### Discounts



Marlowe members



Discovery Tickets



Groups



Schools



**Content guidance**  
Recommended 12yrs+



### SCIENCE MUSEUM LIVE

MON 21 APR 2025

MAIN HOUSE

Brand new for 2025. The Science Museum is going on tour!

Experience the brand-new stage show which will ignite your curiosity, fuel your imagination and inspire you about science in new and exciting ways.

This unmissable family production is sure to capture the imagination of young and old alike.

Recommended 6yrs+

12.30pm & 3.30pm / £20







Supported by Pharon Independent Financial Advisers Limited

# PHILHARMONIA ORCHESTRA

## RESIDENT AT THE MARLOWE THEATRE

One of the world's greatest orchestras right on your doorstep

### MAIN HOUSE

Times 7.30pm


From £18

Discounts (selected performances)

 Marlowe members

 Discovery Tickets

 Groups

 Schools

Philharmonia

SUPPORTED BY

CLASSIC FM

PHARON  
Independent Financial Advisers

ARTS COUNCIL  
ENGLAND

Supported using public funding by  
ARTS COUNCIL  
ENGLAND

### TCHAIKOVSKY'S SYMPHONY NO. 6

TUE 20 MAY 2025

Martyn Brabbins conductor  
Johan Dalene violin

Mozart Overture, *The Abduction from the Seraglio*  
Korngold Violin Concerto

Tchaikovsky Symphony No. 6, 'Pathétique'

The Philharmonia closes the 2024/25 season with Tchaikovsky's 'Pathétique' Symphony.

Enjoy the overture from Mozart's farcical romance set in a Turkish harem, then be transported to the golden age of Hollywood as Swedish-Norwegian virtuoso violinist Johan Dalene performs Korngold's Violin Concerto. Tchaikovsky's Symphony No. 6, entitled "the passionate symphony", closes the concert.

### BEETHOVEN AND SHOSTAKOVICH

MON 29 SEP 2025

Nil Venditti conductor  
Anastasia Kobekina cello

Beethoven *Coriolan* Overture  
Shostakovich Cello Concerto No. 1  
Beethoven Symphony No. 7

Favourites by Beethoven and Shostakovich open the Philharmonia's 2025/26 season. Music inspired by the ancient Roman leader, Coriolanus, is followed by a fiery Cello Concerto and one of Beethoven's greatest compositions Symphony No. 7. The height of achievement for a cellist, we hear Shostakovich's masterpiece in the hands of award-winning soloist Anastasia Kobekina.

### PHILHARMONIA BRASS AT CHRISTMAS

THU 18 DEC 2025

Philharmonia Brass Ensemble

Christmas songs, carols, and seasonal music.

The Philharmonia Brass Ensemble return for their much-loved annual concert full of festive cheer for all the family.

### PHILHARMONIA AT THE MOVIES: BEST OF BRITISH

SUN 18 JAN 2026

Stephen Bell conductor

Enjoy an evening of orchestral music from some of the nation's best loved films.

Expect memorable melodies from beloved British classics including *Mary Poppins*, *Wallace & Gromit*, *Harry Potter* and many more.

### MARIN ALSOP CONDUCTS SCHEHERAZADE

WED 11 MAR 2026

Marin Alsop conductor  
Alisa Weilerstein cello

Márquez Danzón No. 2  
Ortiz Cello Concerto 'Dzonot' (UK Premiere)

Rimsky-Korsakov *Scheherazade*

Marin Alsop returns to Canterbury to conduct 'Mexico's second national anthem' and an exciting new cello concerto.

Gabriela Ortiz's concerto, written for tonight's soloist Alisa Weilerstein, is inspired by the caves and underground rivers of the Yucatán peninsula. To top off this vibrant concert, Rimsky-Korsakov's *Scheherazade* is influenced by the tale of a clever bride who keeps her husband under her spell for 1001 nights.

### ALIM BEISEMBAYEV PLAYS BEETHOVEN

SUN 17 MAY 2026

Adam Hickox conductor  
Alim Beisembayev piano

Mendelssohn *Calm Sea and Prosperous Voyage* Overture

Beethoven Piano Concerto No. 4  
Brahms Symphony No. 1

Beethoven's Fourth Piano Concerto is a masterpiece.

Tonight, we hear an interpretation from winner of the Leeds international piano competition 2021, Alim Beisembayev. Mendelssohn's overture, *Calm Sea and Prosperous Voyage*, is an orchestral seascape taking us on a journey through oceanic stillness. Finally, Brahms's magnificent First Symphony celebrates the poetry and power an orchestra can conjure.







## Matthew Bourne's New Adventures

# SWAN LAKE

### The next generation.

New Adventures return with their audacious, rule-breaking reinvention of Tchaikovsky's masterpiece. *Matthew Bourne's Swan Lake* caused a sensation when it premiered almost 30 years ago. It has become the most successful dance theatre production of all time, creating new audiences and inspiring generations of young dancers. In celebration, *Swan Lake* will take flight once more in a major new revival for the next generation of dancers, and for audiences who will experience it for the very first time.

Thrilling, bold and witty, this genre-defining event shattered convention by replacing the female corps-de-ballet with a menacing male ensemble.

*Matthew Bourne's Swan Lake* took the dance theatre world by storm, becoming the longest running full-length dance classic in the West End and on Broadway. It has since been performed across the globe, collecting over thirty international accolades including an Olivier and three Tony Awards.

"The show that changed the dance landscape forever."

★★★★★ THE OBSERVER

TUE 29 APR-SAT 3 MAY 2025

MAIN HOUSE

Evenings 7.30pm

Thu & Sat matinees 2.30pm

From £17

Discounts (selected performances)



Marlowe members



**Audio Described**  
Thu 1 May 7.30pm



**Content guidance**  
Recommended 5yrs+



**Matthew Bourne's New Adventures Cygnet School curtain raiser performance pre-show**  
Sat 3 May 2.30pm



David Pugh & Cunard present the Newcastle Theatre Royal production

# PRIDE AND PREJUDICE\* (\*SORT OF)

Written by **Isobel McArthur** after Jane Austen

### The five-star comedy sensation direct from the West End.

Direct from its triumph in the West End, where it won the Olivier Award for Best Comedy and the Evening Standard Award, *Pride and Prejudice\* (\*sort of)* is a unique and audacious retelling of Jane Austen's most iconic love story.

Men, money and microphones will be fought over in this irreverent but affectionate adaptation where the stakes couldn't be higher when it comes to romance. This multi-award-winning production features a string of pop classics including *Young Hearts Run Free*, *Will You Love Me Tomorrow* and *You're So Vain*.

It's the 1800s. It's party time. Let the ruthless matchmaking begin.

"Riotously funny... gloriously entertaining... frankly sensational."

★★★★★ VARIETY

"An irreverent hit."

THE NEW YORK TIMES

TUE 6-SAT 10 MAY 2025

MAIN HOUSE

Evenings 7.30pm

Thu & Sat matinees 2.30pm

From £17

Discounts (selected performances)



Marlowe members



Discovery Tickets



Groups



Schools



**Content guidance**  
Contains some strong language





## CHICAGO

Written by **John Kander, Fred Ebb and Bob Fosse**

**MON 12-SAT 17 MAY 2025**

**MAIN HOUSE**

The "sexiest musical ever" (Metro) is back.

Set amidst the razzle-dazzle decadence of the 1920s, *Chicago* is the story of Roxie Hart, a housewife and nightclub dancer, who murders her on-the-side lover after he threatens to walk out on her. Desperate to avoid conviction, she dupes the public, the media and her rival cellmate, Velma Kelly, by hiring Chicago's slickest criminal lawyer to transform her malicious crime into a barrage of sensational headlines.

Chicago's sexy, sassy score has one show-stopping song after another including *Razzle Dazzle*, *Cell Block Tango*, and *All That Jazz*. *Chicago* truly is "superb" (Daily Telegraph).

Recommended 12yrs+

**Evenings 7.30pm Thu & Sat matinees 2.30pm**

**From £17**



**AD Audio Described**  
Thu 15 May 7.30pm



## THE ALTERNATIVE COMEDY SHOW

**THU 15 MAY, THU 12 JUN  
& WED 17 SEP 2025**  
**STUDIO**

**A celebration of comic ideas  
and originality.**

From the sublime to the ridiculously surreal, this is a night of comedy at the cutting edge. This unique show gives you the chance to see some of the most exciting and innovative comedians on the circuit.

Our May show has a headline set from Edinburgh Comedy Award (Best Newcomer) nominated comedian and actor Lucy Pearman.

May contain adult themes and language. Comedy at the Marlowe Theatre is sponsored by Harwood Building Control.

**8pm / £16**



## CALAMITY JANE

**The whip-crackin' musical comedy classic *Calamity Jane* is a rollin' on over the plains to Canterbury!**

Based on the much-loved Doris Day movie, this plumb fancy, "genuine crowd-pleaser of a show" (The Stage) stars the multi-award-winning West End actress and singer Carrie Hope Fletcher (*Cinderella*, *Les Misérables*).

She'll charm you hog-eyed though, especially when trying to win the heart of the dashing Lieutenant Gilmartin. But when the men of Deadwood fall hard for Chicago stage star Adelaide Adams, Calamity struggles to keep her jealousy holstered.

With the sure-fire classic songs *The Deadwood Stage* (*Whip-Crack-Away*), *The Black Hills of Dakota*, and the Oscar-winning *Secret Love*, this production is directed by Nikolai Foster, co-directed and choreographed by Nick Winston with musical supervision by Olivier, Grammy and Tony Award winner Catherine Hayes.

What are you waiting for, you wild coyotes? Grab a posse, whip-crack-away and book now!

**TUE 27-SAT 31 MAY 2025**

**MAIN HOUSE**

**Evenings 7.30pm**

**Wed, Thu & Sat matinees 2.30pm**

**From £17**

**Discounts** (selected performances)

- Marlowe members
- Discovery Tickets
- Groups
- Schools

**CAP Captioned**  
Thu 29 May 2.30pm







A Children's Theatre Partnership, Unicorn Theatre and Sheffield Theatres production

## PIG HEART BOY

Based on the novel by **Malorie Blackman**  
Adapted by **Winsome Pinnock**  
Directed by **Tristan Fynn-Aiduenu**

**This brilliant novel is brought to life in a brand-new adaptation.**

Is it better to have a pig's heart that works or a human heart that doesn't? Cameron is thirteen, and all he wants is to be normal – have friends, go to school, and dive to the bottom of his local swimming pool. But he desperately needs a heart transplant and time is running out. When he's finally offered a new heart, Cameron must choose how far he'll go to get his life back.

From the multi-award-winning writer Malorie Blackman OBE, author of *Noughts and Crosses*, *Pig Heart Boy* comes to our stage in a brand-new adaptation by Winsome Pinnock, and is directed by winner of the 2022 Black British Theatre Award for Best Director, Tristan Fynn-Aiduenu. *Pig Heart Boy* is an engaging, inspiring and thought-provoking theatre experience for all the family.

**"This really is wonderful; hilarious, uplifting, profound, and full of heart."**

★★★★★ WHATSONSTAGE

**WED 4-SAT 7 JUN 2025**

**MAIN HOUSE**

**Wed 7pm**

**Thu & Fri 10.30am & 2pm**

**Sat 2pm & 7pm**

**From £16**

**Discounts** (selected performances)



Marlowe members



Discovery Tickets



Groups



Schools



**BSL Interpreted**  
Fri 6 Jun 2pm



**Content guidance**  
Recommended 9yrs+



**Post show Q&A**  
Thu 5 Jun 10.30am



Bill Kenwright Ltd presents the Liverpool's Royal Court and National Theatre production

**Alan Bleasdale's**

## BOYS FROM THE BLACKSTUFF

Adapted by **James Graham**

**James Graham's powerful new adaptation of Alan Bleasdale's BAFTA Award-winning TV series.**

Gizza job. Go on, gizzit.

80s Liverpool. Chrissie, Loggo, George, Dixie and Yosser are used to hard work and providing for their families. But there is no work and there is no money. What are they supposed to do? Work harder, work longer, buy cheaper, spend less? They just need a chance.

Life is tough but the lads can play the game. Find jobs, avoid the 'sniffers' and see if you can have a laugh along the way.

*Boys from the Blackstuff* is directed by Kate Wasserberg and comes to Canterbury direct from the National Theatre and the West End.

**"The audience hangs on every syllable."**

★★★★★ DAILY MAIL

**"Funny, punchy, humane. A wonderful play crackling with humour."**

★★★★ FINANCIAL TIMES

**TUE 24-SAT 28 JUN 2025**

**MAIN HOUSE**

**Evenings 7.30pm**

**Thu & Sat matinees 2.30pm**

**From £17**

**Discounts** (selected performances)



Marlowe members



Discovery Tickets



Groups



Schools



**Captioned**  
Thu 26 Jun 2.30pm



**Content guidance**  
Recommended 10yrs+  
Please visit our website  
for content warnings





## TOM GATES EPIC STAGE SHOW

SAT 21 JUN 2025  
MAIN HOUSE

The totally brilliant, amazing, wonderful Tom Gates is back in 2025 with a brand-new EPIC Stage Show!

Based on the bestselling books by Liz Pichon, *Tom Gates EPIC Stage Show* comes to our theatre bringing alive the illustrations and music that makes Tom Gates hugely popular around the world. With catchy tunes and hilarious performances, this fantastic new stage show brings the best of *The Brilliant World of Tom Gates* into one live show.

Recommended 5yrs+

12.30pm & 3.30pm / £20



## THE ROCKY HORROR SHOW

Written by Richard O'Brien

MON 7-SAT 12 JUL 2025  
MAIN HOUSE

The legendary rock 'n' roll musical returns to Canterbury!

Having been seen by over 35 million theatregoers, *The Rocky Horror Show* is the story of two squeaky clean college kids Brad and his fiancée Janet. When by a twist of fate, their car breaks down outside a creepy mansion whilst on their way to visit their former college professor, they meet the charismatic Dr Frank'n'Furter. It is an adventure they'll never forget, filled with fun, frolics, frocks, and frivolity.

Directed by Christopher Luscombe, *The Rocky Horror Show* is the biggest party and features timeless classics, including *Sweet Transvestite*, *Dammit Janet*, and of course, the pelvic thrusting show-stopping *Time Warp*.

Recommended 14yrs+

Mon-Thu evenings 8pm Fri & Sat evenings 5pm & 8.30pm

From £17



Chris Harper Productions

## THE LION, THE WITCH AND THE WARDROBE

Based on the novel by C.S Lewis

Get ready for the adventure of a lifetime as the West End smash-hit returns!

Step through the wardrobe into the magic kingdom of Narnia where a world of wonder awaits.

Join Lucy, Edmund, Susan and Peter as they meet new friends, face dangerous foes and learn the lessons of courage, sacrifice, and the power of love.

Celebrating the 75th anniversary of C.S. Lewis's classic novel, watch *The Lion, the Witch and the Wardrobe* come to life on stage in this spectacular production - a delight for all ages.

"Spectacular."

★★★★★ METRO

"A fantastical family treat."

★★★★ THE TELEGRAPH

TUE 15-SAT 19 JUL 2025  
MAIN HOUSE

Evenings 7pm  
Wed, Thu & Sat matinees 2pm  
From £17

Discounts (selected performances)

- Marlowe members
- Discovery Tickets
- Groups
- Schools

CAP Captioned  
Fri 18 Jul 7pm

BSL Interpreted  
Sat 19 Jul 2pm

Content guidance  
Recommended 6yrs+







## CIRQUE: THE GREATEST SHOW - REIMAGINED

TUE 22 & WED 23 JUL 2025

MAIN HOUSE

**Where musical theatre meets circus.**

It's time to step into the light. Let us lead you into a world where the very best of musical theatre showstoppers meets jaw-dropping circus spectacle.

A world that explodes into colour as everyone's favourite West End and Broadway hits combine with breath-taking performances, incredible contortionists, and thrilling feats of agility and flair.

Tue 7pm & Wed 2pm & 7pm

From £17



## DINOSAUR WORLD LIVE

FRI 15-SUN 17 AUG 2025

MAIN HOUSE

**Olivier award-winner for Best Family Show 2024!**

Dare to experience the dangers and delights of *Dinosaur World Live* in this roarsome interactive show for all the family.

Grab your compass and join our intrepid explorer across uncharted territories to discover a prehistoric world of astonishing (and remarkably life-like) dinosaurs. Meet a host of impressive creatures, including the Tyrannosaurus Rex, a Triceratops, Giraffatitan, Microraptor and Segnosaurus! Don't miss this entertaining and mind-expanding Jurassic adventure, live on stage.

Recommended 3yrs+

Fri 2pm, Sat 11am, 2pm & 4.30pm, Sun 11am & 2pm

From £16



**BSL Interpreted**  
Sun 17 Aug 2pm



## BAT OUT OF HELL

Music, lyrics and book by **Jim Steinman**

Based on music by **Meat Loaf**

**The global phenomenon returns.**

*Bat Out of Hell* makes a triumphant return to the UK in 2025, with a thrilling spectacle of a show where the timeless music of Jim Steinman and Meat Loaf reigns supreme!

Inspired by the spectacular arena tour of Australia and New Zealand, this reimagined show features a dynamic eight-piece rock band live on stage and the epic cast - including Glenn Adamson and Katie Tonkinson, as Strat and Raven, with Rob Fowler and Sharon Sexton as Falco and Sloane - will bring their powerhouse vocals to Meat Loaf's anthems including *I'd Do Anything For Love (But I Won't Do That)*, *Dead Ringer For Love*, and of course *Bat Out of Hell*.

Get ready to witness *Bat Out of Hell: The Musical* as it explodes back onto the stage in a spectacle that promises to be nothing short of legendary!

TUE 29 JUL-SAT 2 AUG 2025

MAIN HOUSE

Evenings 7.30pm

Thu & Sat matinees 2.30pm

From £18

**Discounts** (selected performances)



Marlowe members



Discovery Tickets



Groups



Schools



**Content guidance**

Recommended 13yrs+

Please visit our website for content warnings





# The Addams Family

THE MUSICAL COMEDY

## THE ADDAMS FAMILY

Written by **Marshall Brickman** and **Rick Elice**  
Music and Lyrics by **Andrew Lippa**

### Make this summer an absolute scream!

Everyone's favourite kooky family are back on stage this summer in the spectacular musical comedy from Marshall Brickman and Rick Elice (writers of the multi-award-winning *Jersey Boys*).

Wednesday Addams, the ultimate princess of darkness, is all grown up and has a shocking secret that only Gomez knows. She's fallen in love with a sweet young man from a respectable family. With his cherished Morticia in the dark, will Gomez manage to keep his daughter's secret until the two families meet for a fateful dinner with hilarious consequences?

Join them, plus Uncle Fester, Lurch, Pugsley, Grandma and more for a heart-warming story of love, family and friendship... with a twist! Featuring a live orchestra and extraordinary original score, *The Addams Family* is sure to entertain whether you are 7 or 307!

"Great fun for boys and ghouls of all ages."

DAILY EXPRESS

"Lavish musical comedy."

THE TIMES

TUE 19-SAT 23 AUG 2025

MAIN HOUSE

Evenings 7.30pm

Wed, Thu & Sat matinees 2.30pm

From £18

Discounts (selected performances)



Marlowe members



Discovery Tickets



Groups



Schools



Audio Described  
Thu 21 Aug 2.30pm



Dance Consortium presents

## CIRQUE ÉLOIZE: iD RELOADED

Directed and created by **Jeannot Painchaud**

### Mixing urban dance, daring stunts and dazzling acrobatics.

*iD Reloaded* inspired by *iD*, Cirque Éloize's ground-breaking West End and international hit, is an intoxicating blend of circus arts and urban dance: b-boying/b-girling, breakdance, hip-hop and more.

The scene is set in the heart of a city, in a public space where people seek refuge and a chance to shed their anonymity; a place where identity is forged and individuality is expressed.

Set to a pulsating soundtrack by composers Jean-Phi Goncalves (*Beast*) and Alex McMahon, directed and created by Jeannot Painchaud, *iD Reloaded* is a thrilling piece of work, full of attitude, energy and invention.

"Mixes circus and urban dance to cracking effect – the skill and excitement levels are sky-high." THE GUARDIAN

"This truly thrilling modern circus show from the Canadian-based troupe was as nail-biting as it was beautiful." THE TELEGRAPH

(Reviews from *iD*)

FRI 19 & SAT 20 SEP 2025

MAIN HOUSE

Fri evening 7.30pm

Sat matinee 3pm

From £17

Discounts (selected performances)



Marlowe members



Discovery Tickets



Groups



Schools



Post show Q&A  
Fri 19 Sep 7.30pm









# DEAR ENGLAND

A National Theatre production

## DEAR ENGLAND

Written by **James Graham**

Directed by **Rupert Goold**

Set design by **Es Devlin**

**The National Theatre's Olivier Award-winning smash-hit comes to Canterbury in a highly anticipated national tour.**

It's time to change the game. The country that gave the world football has since delivered a painful pattern of loss. The England men's team has the worst track record for penalties in the world, and new manager Gareth Southgate knows he needs to open his mind and face up to the years of hurt to take team and country back to the promised land.

From multi-award-winning writer James Graham (*Sherwood*, BBC) and director Rupert Goold (*Patriots*, *Cold War*), this five-star "new stage epic" (Telegraph) tells the uplifting, at times heartbreaking, and ultimately inspiring story of Gareth Southgate's revolutionary tenure as England manager in a gripping examination of nation and game.

A co-production with JAS Theatricals.

**"A theatrical spectacle as uplifting as any England victory."**

★★★★★ THE TELEGRAPH

**TUE 7-SAT 18 OCT 2025**

**MAIN HOUSE**

**From £18**

**Evenings 7.30pm**

**Thu & Sat matinees 2pm**

**Sun 5pm**

**Discounts** (selected performances)

Marlowe members

Discovery Tickets

Groups

Schools

**CAP** **Captioned**  
Thu 9 Oct 2pm

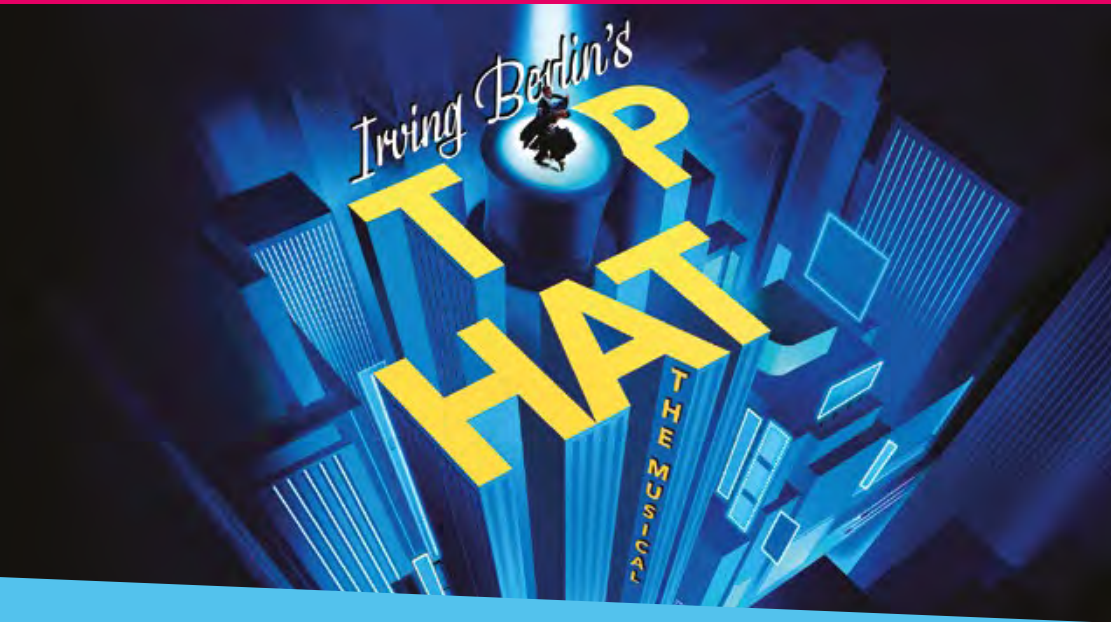
**AD** **Audio Described**  
Sat 11 Oct 7.30pm

**BSL Interpreted**  
Thu 16 Oct 2pm

**Content guidance**  
Recommended 10yrs+







## TOP HAT

Music and Lyrics by **Irving Berlin**

Based on **RKO's** Motion Picture

Adapted for the stage by **Matthew White & Howard Jacques**

**You're invited to the musical equivalent of a fine vintage champagne.**

Effervescent, elegant and exhilarating, *Top Hat* is a heady romantic cocktail laced with sparkingly witty dialogue, stunning choreography, lavish sets and gorgeous costumes. Irving Berlin's irresistible score includes some of Hollywood's greatest songs, the immortal *Cheek to Cheek*, *Let's Face the Music and Dance*, *Top Hat White Tie and Tails* and *Puttin' on the Ritz*.

When Broadway star Jerry Travers arrives in London to open a new show, he crosses paths with model Dale Tremont, whose beauty sleep is rudely interrupted by Jerry tap dancing in the hotel suite above hers. Instantly smitten, Jerry vows to abandon his bachelor life to win her - but the path of true love never did run smooth.

**TUE 21-SAT 25 OCT 2025**

**MAIN HOUSE**

**Evenings 7.30pm**

**Wed, Thu & Sat matinees 2.30pm**

**From £18**

**Discounts** (selected performances)



Marlowe members



Discovery Tickets



Groups



Schools



**Audio Described**

Fri 24 Oct 7.30pm



## TINA - THE TINA TURNER MUSICAL

Written by **Katori Hall**

**The West End mega-hit comes to Canterbury in its first ever national tour.**

From humble beginnings in Nutbush, Tennessee, to her triumphant transformation into a multi-award-winning global superstar, Tina Turner didn't just break the rules, she rewrote them, winning 12 Grammy Awards.

Set to the pulse-pounding soundtrack of her iconic hits, including *The Best*, *What's Love Got To Do With It?* and *River Deep, Mountain High*, discover the heart and soul behind the Queen of Rock 'n' Roll.

Presented in association with Tina Turner, written by Olivier Award and Pulitzer Prize winning playwright Katori Hall (*The Mountaintop*) and directed by the internationally acclaimed Phyllida Lloyd (*Mamma Mia!*), this five-star show is "simply the best" (Daily Mail).

"A raw musical triumph." ★★★★★ THE TIMES

"One of the most impressive musicals I've ever seen."

BBC RADIO 4, FRONT ROW

**TUE 28 OCT-SAT 8 NOV 2025**

**MAIN HOUSE**

**Evenings 7.30pm**

**Wed, Thu & Sat matinees 2.30pm**

**From £28**

**Discounts** (selected performances)



Marlowe members



Discovery Tickets



Groups



**AD Audio Described**  
Wed 5 Nov 7.30pm



**Content guidance**  
Recommended 14yrs+  
Please visit our website  
for content warnings





# FIDDLER ON THE ROOF

Book by **Joseph Stein**  
Music by **Jerry Bock**  
Lyrics by **Sheldon Harnick**

## Direct from the West End.

A theatrical triumph, the Regent's Park Open Air Theatre's electrifying *Fiddler on the Roof* is coming to Canterbury.

This is a rare opportunity to catch this critically-acclaimed production from the powerhouse creative team directed by Jordan Fein (*Oklahoma*, *Young Vic*), choreographed by Julia Cheng (*Cabaret*) and designed by Tom Scutt (Winner of the 2024 Tony Award for *Cabaret*).

One of the greatest musicals of all time - featuring *If I Were A Rich Man*, *Tradition*, *Matchmaker* and *Sunrise, Sunset* - *Fiddler on the Roof* is a classic musical of joy, revolution and community and an exuberant celebration of love and life.

Based on the Sholem Aleichem Stories by special permission of Arnold Perl. Produced on the New York Stage by Harold Prince with the original New York Stage Production directed and choreographed by Jerome Robbins.

"Showstopper. Speaks to the present. Sublime."

★★★★★ THE GUARDIAN

TUE 11-SAT 15 NOV 2025

MAIN HOUSE

Evenings 7.30pm

Wed, Thu & Sat matinees 2.30pm

From £18

Discounts (selected performances)



Marlowe members



Discovery Tickets



Groups



Schools



Captioned

Fri 14 Nov 7.30pm



Content guidance

Recommended 12yrs+

Please visit our website for content warnings



# BALLET BLACK: SHADOWS

Cassa Pancho's award-winning neo-classical ballet company present a double bill of new work.

Cassa Pancho's Ballet Black returns with the darkly comic adaptation of international bestselling novel, *My Sister, The Serial Killer* by Oyinkan Braithwaite. When Korede gets a call from her sister Ayoola, she knows what to do. It's the third boyfriend Ayoola has killed in 'self-defence,' and the third mess Korede has to clean up. Things change, when Ayoola starts dating the doctor Korede has loved for years. Korede can't let him be the next victim - but saving him might mean betraying her sister...

The double bill is completed by Brooklyn-born, award-winning choreographer Chanel DaSilva, making her choreographic debut with *A Shadow Work*. Renowned for using the arts to inspire meaningful change, DaSilva has made history as the first Black woman to choreograph for The Joffrey Ballet. In her debut for Ballet Black, DaSilva delves into the profound practice of shadow work, exploring its power to reveal our true selves. Her work is celebrated for its deep exploration of humanity and its potential to inspire transformation both within the dance world and beyond.

TUE 18 NOV 2025

MAIN HOUSE

Evening 7.30pm

From £17

Discounts (selected performances)



Marlowe members



Discovery Tickets



Groups



Schools



Content guidance

Recommended 12yrs+

Please visit our website for content warnings







A Marlowe Theatre and Evolution Productions co-production

# SNOW WHITE AND THE SEVEN DWARFS

**Join us for this year's spectacular, fun-filled, family pantomime!**

The show will star Marlowe legend Ben Roddy (Winner of 'Best Dame' at the UK Pantomime Awards 2024), with further exciting star casting to be announced.

Once again, the show will be written and directed by Paul Hendy and produced by the same award-winning team that brought you the five-star Box Office smash-hits *Aladdin* and *Beauty and the Beast*. This magical extravaganza promises to be packed with unforgettable thrills, stunning costumes, fabulous music and hilarious jokes.

**"Fantastic, festive, family fun... utterly brilliant!"**

★★★★★ THEATRE SOUTH EAST

**"A dazzling delight from start to finish!"**

★★★★★ THE REVIEWS HUB

Reviews of *Beauty and the Beast*

Sponsored by

**southeastern**



WALKER CONSTRUCTION

**TICKETS  
SELLING FAST!**

**FRI 28 NOV 2025  
- SUN 11 JAN 2026  
MAIN HOUSE**

**From £18**

**Discounts** (selected performances)

- Marlowe members
- Discovery Tickets
- Groups
- Schools
- Under 16s

**RP Relaxed**  
Thu 4 Dec 10.30am

**AD Audio Described**  
Sun 7 Dec 1pm

**BSL Interpreted**  
Sat 13 Dec 2.30pm  
Sun 28 Dec 2.30pm

**CAP Captioned**  
Sun 14 Dec 1pm & 5pm





Agatha Christie®

# DEATH ON THE NILE



Agatha Christie's

## DEATH ON THE NILE

Written by **Ken Ludwig**

Directed by **Lucy Bailey**

### Bitter rivals. Buried secrets. A love to die for.

On board a luxurious cruise under the heat of the Egyptian sun, a couple's idyllic honeymoon is cut short by a brutal murder. As secrets that have been buried in the sands of time finally resurface, can the world-famous detective, Hercule Poirot, untangle the web of lies and solve another crime?

Following the sell-out tours of *And Then There Were None* and *Murder on the Orient Express*, *Death on the Nile* reunites celebrated director Lucy Bailey (*Witness for the Prosecution*), writer Ken Ludwig and producer Fiery Angel for the European premiere of a brand-new adaptation of the globally-celebrated Agatha Christie story on a nationwide tour.

*Death on the Nile* © 2024 Agatha Christie Limited & Ken Ludwig. All rights reserved. Adapted from *Death on the Nile* © 1937 Agatha Christie Limited. All rights reserved. *Death on the Nile* Agatha Christie and Poirot are registered trademarks of Agatha Christie Limited in the UK and elsewhere. All rights reserved.

TUE 20-SAT 24 JAN 2026

MAIN HOUSE

Evening 7.30pm

Wed, Thu & Sat matinees 2.30pm

From £18

Discounts (selected performances)

- Marlowe members
- Discovery Tickets
- Groups
- Schools

**Captioned**  
Thu 22 Jan 2.30pm



# SUNNY AFTERNOON

The KINKS



## SUNNY AFTERNOON

Music and Lyrics by **Ray Davies**

Book by **Joe Penhall**

Original story by **Ray Davies**

Directed by **Edward Hall**

### The Olivier Award-winning musical sensation about one of Britain's greatest bands is back.

This "indisputably terrific" (The Times) musical celebrates the raw energy, passion and timeless sound of The Kinks, telling their story through an incredible back catalogue of chart-toppers, including *You Really Got Me*, *Lola* and *All Day and All of the Night*.

Winning the Olivier for 'Best New Musical', *Sunny Afternoon* charts the euphoric highs and agonising lows of one of the most iconic bands of all time - jam-packed with their irresistible music that influenced an entire generation.

Following a phenomenal two years in the West End and a sensational UK & Ireland tour, *Sunny Afternoon* is coming to Canterbury.

"A belter! Funny, stylish. It has everything The Kinks had."

★★★★★ DAILY MAIL

"A blazing triumph. I swear you'll get goosebumps."

★★★★★ TELEGRAPH

TUE 3-SAT 7 FEB 2026

MAIN HOUSE

Evening 7.30pm

Wed, Thu & Sat matinees 2.30pm

From £18

Discounts (selected performances)

- Marlowe members
- Discovery Tickets
- Groups
- Schools







An Empire Street Production

## PRIMA FACIE

Written by **Suzie Miller**

**Jodie Comer (*Killing Eve*) comes to the Marlowe Theatre with her Olivier and Tony Award-winning performance in Suzie Miller's gripping one-woman play.**

Tessa is a brilliant young barrister. She has worked her way up from working class origins to be at the top of her game; prosecuting; cross examining and winning. An unexpected event forces her to confront the lines where the patriarchal power of the law, burden of proof and morals diverge.

*Prima Facie* takes us to the heart of where emotion and experience collide with the rules of the game. Justin Martin directs this solo actor tour de force, with designs by Miriam Buether, lighting by Natasha Chivers, sound by Max and Ben Ringham, Video by Willie Williams and featuring a soundtrack by Rebecca Lucy Taylor.

**"A masterpiece. Unlike anything I've ever seen."**

★★★★★ THE INDEPENDENT

**TUE 3-SAT 7 MAR 2026**

**MAIN HOUSE**

**Evenings 7.30pm**

**Thu & Sat matinees 3pm**

**From £18**

**Discounts** (selected performances)



Marlowe members



Discovery Tickets



Groups



Schools



**Captioned**  
Thu 5 Mar 3pm



**Content guidance**  
Recommended 12yrs+  
Please visit our website  
for content warnings





# C R I S I S



Kenny Wax and Stage Presence present the Mischief production

## CHRISTMAS CAROL GOES WRONG

**A guaranteed catastrophe from multi-award-winning company Mischief.**

The Cornley Amateur Drama Society are back with tidings of chaos and joy, ready to tackle the Charles Dickens' classic, *A Christmas Carol*.

A new production of *Christmas Carol Goes Wrong* smashes into the Marlowe Theatre, direct from a strictly limited eight-week West End run. Don't miss this guaranteed catastrophe from Mischief, the multi-award-winning company behind *The Play That Goes Wrong*, *Peter Pan Goes Wrong* and *The Comedy About a Bank Robbery*.

As the Cornley crew hilariously battle miscommunication, delays to their set, actors missing in action and a growing feud over who will play the lead, it's sure to be a disastrous take on the much-loved classic story of Ebenezer Scrooge. Will Cornley finally change their ways, or will their misfortunes wreak havoc with hysterical consequences?

Enjoy a slice of pure escapism at the worst production in past, present and yet to come! Don't be a Scrooge, book now.

**TUE 24 FEB-SUN 1 MAR 2026**  
MAIN HOUSE

**Tue-Sat evenings 7.30pm**  
**Wed, Sat & Sun matinees 2pm**

**From £18**

**Discounts** (selected performances)



Marlowe members



Discovery Tickets



Groups



Schools



**BSL Interpreted**  
Sat 28 Feb 2pm



## TO KILL A MOCKINGBIRD

Written by **Aaron Sorkin**

Based on the novel by **Harper Lee**

**The thrilling courtroom drama about racial injustice and childhood innocence.**

Aaron Sorkin's riveting, award-winning stage adaptation of the seminal American novel about racial injustice and childhood innocence became a Broadway and West End sensation with star-studded sell-out seasons on both sides of the Atlantic. Now the iconic production comes to Canterbury.

Successful lawyer, Atticus Finch, encourages kindness and empathy in his children, but is pushed to the limits of these qualities himself when he resolves to uncover the truth in a town that seems determined to hide it.

Set in 1934 Alabama, *To Kill a Mockingbird* was inspired by novelist Harper Lee's own childhood and has sold more than 45 million copies worldwide. It won the Pulitzer Prize for Literature and was long at the top of the banned book lists.

**"All rise for this powerfully uplifting theatrical event."**

★★★★★ EVENING STANDARD

**TUE 17- SAT 21 MAR 2026**  
MAIN HOUSE

**Evenings 7.30pm**  
**Wed, Thu & Sat matinees 2.30pm**

**From £18**

**Discounts** (selected performances)



Marlowe members



Discovery Tickets



Groups



Schools



**Captioned**  
Wed 18 Mar 2.30pm



**Content guidance**  
Recommended 12yrs+  
Please visit our website  
for content warnings







## Matthew Bourne's New Adventures

# THE RED SHOES

Music by **Bernard Herrmann**

Based on the film by **Michael Powell** and **Emeric Pressburger** and the **Hans Christian Andersen** fairytale

### The double Olivier Award-winning smash hit returns.

The timeless fairytale and Academy Award-winning movie, *The Red Shoes* has captivated audiences and inspired generations of dancers with its powerful tale of obsession, possession and one girl's dream to be the greatest dancer in the world. Victoria Page lives to dance but her ambitions become a fierce struggle between the two men who inspire her passion.

Matthew Bourne's magical double Olivier Award-winning production of the legendary Powell and Pressburger film is set to a score orchestrated by Terry Davies, featuring the mesmerizing music of golden-age Hollywood composer Bernard Herrmann, with sumptuous designs by Lez Brotherston (set and costumes), Paule Constable (lighting) and Paul Groothuis (sound).

An intoxicating drama where life imitates art with fateful consequences, *The Red Shoes* will dazzle your senses and break your heart.

TUE 31 MAR-SAT 4 APR 2026

MAIN HOUSE

Evenings 7.30pm

Thu & Sat matinees 2.30pm

From £18

Discounts (selected performances)



Marlowe members



Discovery Tickets



Groups



Schools



**Audio Described**  
Thu 2 Apr 7.30pm



**Content guidance**  
Recommended 7yrs+



Royal Shakespeare Company

# HAMLET

Written by **William Shakespeare**

Directed by **Rupert Goold**

### The Royal Shakespeare Company returns to Canterbury with a "must-see" (Guardian) new production of *Hamlet*.

Hamlet's mother has married his uncle, and at a less than decent interval since the death of his father. As he pulls at the threads of his not-so-happy new family, Hamlet unravels a web of deceit and immorality that leads to the ultimate crisis of conscience.

Fresh from its run in Stratford-upon-Avon, this "scintillating new staging" (Financial Times) of Shakespeare's famous revenge drama visits Canterbury as part of a national tour to the RSC's partner theatres.

The stellar creative team is led by multi-award-winning director Rupert Goold whose recent work includes *Dear England* (National Theatre) and *King Charles III* (Almeida).

★★★★★ MORNING STAR

★★★★★ FINANCIAL TIMES

★★★★★ GUARDIAN

TUE 21-SAT 25 APR 2026

MAIN HOUSE

Evenings 7pm

Thu & Sat matinees 2pm

From £18

Discounts (selected performances)



Marlowe members



Discovery Tickets



Groups



Schools



**Chilled**  
Thu 23 Apr 2pm



**Captioned**  
Thu 23 Apr 7pm



**BSL Integrated**  
Fri 24 Apr 7pm



**Audio Described**  
Sat 25 Apr 2pm





## HERE & NOW

Written by **Shaun Kitchener**

**The hilarious and heart-warming new musical based on the songs of pop phenomenon Steps.**

Welcome to seaside superstore Better Best Bargains, where it's Friday night, the vibe is right and everyone's dancing in the aisles. With Caz and her friends around, who knows what love has in store...

Directed by the award-winning Rachel Kavanaugh (*The Great British Bake Off Musical*), *HERE & NOW* is produced by Steps themselves, ROYO, and music legend Pete Waterman, and features many of Steps' iconic hits, including *Stomp*, *5,6,7,8*, and *Last Thing on My Mind*.

Book your tickets now - it'd be a tragedy to miss it!

**"It's hard to imagine a Steps musical done better."**

THE STAGE

**"The biggest jukebox hit since *Mamma Mia!*"**

THE SUN

TUE 12-SAT 16 MAY 2026

MAIN HOUSE

Evenings 7.30pm

Wed, Thu & Sat matinees 2.30pm

From £18

Discounts (selected performances)



Marlowe members



Discovery Tickets



Groups



Schools



**Content guidance**

Recommended 5yrs+

Please visit our website for content warnings

Photo of the 2024 World Premiere cast

## PRISCILLA QUEEN OF THE DESERT

**Get ready to turn up the glam - *Priscilla Queen of the Desert* is back, bringing all the glitz and show-stopping magic you've been waiting for!**

From the producers of *Hairspray* and *The Full Monty*, this sparkling musical extravaganza is packed with jaw-dropping dance routines, eye-popping costumes, and a glittering soundtrack full of your favourite anthems. With hits like *Hot Stuff*, *It's Raining Men*, *I Will Survive*, *Girls Just Wanna Have Fun*, *Finally* and more, it's an unforgettable night of pure joy and disco magic.

Based on the 1994 Oscar-winning movie, *Priscilla* takes you on a hilarious, heart-warming ride as three fabulous friends hit the road in a shimmering bus bound for the Outback, ready to put on the show of a lifetime. On this epic adventure, they discover the true power of love, acceptance, and friendship. It's a celebration of being unapologetically yourself and embracing others for who they are.

**"The greatest disco anthems ever to fill a dance floor!"**

★★★★ THE TELEGRAPH

MON 25-SAT 30 MAY 2026

MAIN HOUSE

Evenings 7.30pm

Thu & Sat matinees 2.30pm

From £18

Discounts (selected performances)



Marlowe members



Discovery Tickets



Groups



Schools



**Audio Described**

Wed 27 May 7.30pm







John Cleese's

# FAWLTY TOWERS THE PLAY

Based on the TV series by **John Cleese & Connie Booth**

**The “greatest British sitcom of all time” (Radio Times) is back – this time on stage!**

Nearly 50 years since it first graced our TV screens, *Fawlty Towers* is now a brand-new stage play adapted by comedy legend John Cleese and directed by Caroline Jay Ranger.

Fresh from a sold-out West End season, this laugh-out-loud production was universally acclaimed by every London and national critic.

Join Basil, Sybil, the delightfully bumbling Major, and an 18-strong cast as they bring to life all your favourite moments from the show's unforgettable twelve episodes. With sharp wit, chaos, and calamity at every turn, this is the comedy event of the year!

Secure your tickets now and relive the madness of *Fawlty Towers* live on stage. It's a staycation you'll never forget!

“The funniest show in town.” *DAILY EXPRESS*

“Fawltless.” *MAIL ON SUNDAY*

**TUE 21-SAT 25 JUL 2026**

**MAIN HOUSE**

**Evenings 7.30pm**

**Wed, Thu & Sat matinees 2.30pm**

**From £18**

**Discounts** (selected performances)



Marlowe members



Discovery Tickets



Groups



Schools



**Audio Described**

Fri 24 Jul 7.30pm



## ABI CLARKE: ROLE MODEL

**SAT 19 APR 2025**

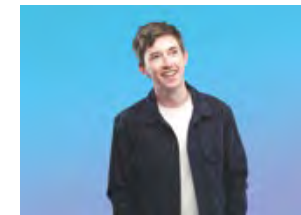
**STUDIO**

**Abi's taken the internet by storm, but now it's time to see what she does best – stand-up!**

Abi Clarke posted a video online, went to bed a “nobody”, then woke up to thousands of followers.

After a sold-out run at the Edinburgh Fringe – this is the debut show they've been waiting for!

**8pm / £20**



## JAKE LAMBERT: THE SUNSHINE KID

**FRI 16 & SAT 17 MAY 2025**

**STUDIO**

**Extra date added due to popular demand!**

Described as “a joke machine” by The Telegraph, the show will see the comedian talk about trying to navigate his way through everyday life.

Strictly 14yrs+

**8pm / £15.50**



## NIKITA KUZMIN: MIDNIGHT DANCER

**WED 21 MAY 2025**

**MAIN HOUSE**

**Nikita Kuzmin invites you to a fairytale ball like no other.**

This brand-new dance spectacular is a modern-day Cinderella story and features all of your favourite dance floor anthems, dazzling costumes and explosive dancing. Don't miss TV dance star Nikita Kuzmin like you've never seen him before!

**7.30pm / From £24**



## DARA Ó BRIAIN: RE:CREATION

**THU 22 & FRI 23 MAY 2025**

**MAIN HOUSE**

**Dara Ó Briain is hitting the road with a brand-new tour show.**

As one of the UK's best-loved stand-up comedians and television presenter, Dara is best known in the UK for hosting BBC's *Mock the Week* for 16 years.

Strictly 14yrs+

**7.30pm / £33.50**



## OMID DJALILI: NAMASTE

**SAT 24 MAY 2025**

**MAIN HOUSE**

**The Persian comedy powerhouse performs his critically-acclaimed new show.**

Omid Djalili performs his critically-acclaimed new show *Namaste* where he peacefully bows to his inner anger and unleashes a torrent of comedic vitriol upon the current state of this dangerously messed up planet.

Recommended 16yrs+

**7.30pm / £31**





**ALJAZ & JANETTE: A NIGHT TO REMEMBER**

SUN 25 MAY 2025  
MAIN HOUSE

The brand-new show from *Strictly* favourites Aljaz & Janette! Aljaz and Janette have graced UK stages across the country for over 6 years always delivering great shows with spectacular jaw-dropping dances.

A *Night to Remember* is finally here. It promises to deliver an even greater dancing experience than ever before. They return with their very own live band, fronted by boogie woogie legend Tom Seals, and a terrific ensemble cast of dancers and singers.

2.30pm & 7.30pm / From £28




**NICK MOHAMMED IS MR SWALLOW: SHOW PONY**

SUN 1 JUN 2025  
MAIN HOUSE

The *Ted Lasso* star returns as his critically-acclaimed alter-ego Mr. Swallow with a brand-new show. *Show Pony* has been described as "payback for everyone who didn't come to the last tour". Expect magic, music and a whole load of mistakes.

Recommended 14yrs+

7.30pm / £31




**CHRIS HADFIELD: A JOURNEY INTO THE COSMOS**

SUN 8 JUN 2025  
MAIN HOUSE

A rare opportunity to be inspired by one of the world's most remarkable explorers. Join Colonel Chris Hadfield – acclaimed astronaut, test pilot, spacewalker, spaceship commander, and best-selling author – for a captivating journey into the vast universe.

7.30pm / From £29



**ALEX KEALY: THE FEAR**

FRI 4 JUL 2025  
STUDIO

Alex Kealy is taking his new stand-up show on a national tour. After a five-star, sell-out run at the Edinburgh Fringe, the "sharply witty, almost sexily cerebral" (Daily Telegraph) comic presents a comedy show about fear.

8pm / £17.50




**JIMMY CARR: LAUGHS FUNNY**

FRI 4 & SAT 5 JUL 2025  
MAIN HOUSE

Jimmy Carr is going back on tour. If you like fast-paced, edgy one-liners then get ready to be happy. Jimmy Carr is back with his brand-new show.

*Jimmy Carr: Laughs Funny* will be 90 minutes of solid jokes, no interval.

Recommended 16yrs+

7pm & 9.30pm / £38




**RUSSELL KANE: HYPERACTIVE**

MON 2 & TUE 3 JUN 2025  
MAIN HOUSE

Russell is out on the road with his brand-new, high-energy tour. Whirlwind, FitBit-breaking comedian, presenter, actor and author Russell Kane is out on the road again, setting it on fire with his unique recipe of sharp wit and "storming physical comedy" (Mail on Sunday).

Strictly 14yrs+

7.30pm / £33.50




**MICHAEL AKADIRI: TRUST ME, I'M A DADDY**

FRI 13 JUN 2025  
STUDIO

Multi-award-winning comedian and junior doctor brings his new show on tour. Following his Biggest Award in Comedy nominated debut, the "hugely entertaining" (Chortle) Michael Akadiri brings his sophomore show, *Trust Me I'm a Daddy* to Canterbury! Join the "supremely talented" (Metro) comedian and junior doctor as he navigates juggling medicine, comedy and now parenting!

8pm / £16.50




**EDINBURGH COMEDY PREVIEWS**

SAT 5, SAT 12 & SAT 19 JUL 2025  
STUDIO

Up-and-coming comic talent bring some brand-new stand-up to our Studio. Get a sneak preview of some of the comedy shows that are about to make a splash at this year's Edinburgh Fringe. Each show features two work-in progress sharings.

8pm / £16




**GUENTER STEINER: UNFILTERED LIVE**

SUN 13 JUL 2025  
MAN HOUSE

Buckle up and fasten your seatbelts. A hugely entertaining all-areas-access conversation spanning a decade inside Formula 1, with former Haas F1 team principal Guenter Steiner, star of Netflix's smash hit docuseries *Drive to Survive*. Uncompromising, brutally funny and searingly honest, this is Guenter at his very best, telling his story as only he can.

Recommended 14yrs+

3pm & 7.30pm / From £38





## JOOLS HOLLAND AND HIS RHYTHM & BLUES ORCHESTRA

SUN 20 & MON 21 JUL 2025

MAIN HOUSE

**A genuine British musical legend.**

Featuring special guest star Chris Difford and guest vocalists Ruby Turner, Louise Marshall and Sumudu Jayatilaka, plus introducing Joe Webb. The rhythm and blues phenomenon returns to Canterbury.

**7.30pm / From £44**



## LONDON SYMPHONIC ROCK ORCHESTRA

THU 24 & FRI 25 JUL 2025

MAIN HOUSE

**Join the London Symphonic Rock Orchestra for an evening of iconic rock hits delivered in the most spectacular way.**

Boundary breaking pioneers fusing the omnipotent power of the orchestra with innovative technology and the raucous rebellion of rock.

Strictly 14yrs+

**7.30pm / From £36**



## JOSH WIDDICOMBE: NOT MY CUP OF TEA

SUN 14 & MON 15 SEP 2025

MAIN HOUSE

**Extra date added due to popular demand!**

Josh Widdicombe is back on tour, not again! By now he has almost certainly mastered the art of stand-up, either that or he has wasted the last 15 years of his life.

Strictly 14yrs+

**7.30pm / £33.50**



## UNCANNY: FEAR OF THE DARK

TUE 30 SEP 2025

MAIN HOUSE

**Do you have a fear of the dark?**

The first *Uncanny* live stage show *I Know What I Saw* was one of the best-selling paranormal shows in theatre history. Now, Danny Robins and his team of experts are back with even more terrifying real-life stories and witness accounts that will have you gripped from the very beginning.

**7.30pm / From £25**



## JOANNE McNALLY: PINOTPHILE

WED 1 OCT 2025

MAIN HOUSE

**Join Joanne for a wild ride as she navigates situationships, revenge, frenemies and rejection in her "terrifyingly funny" (London Evening Standard) and "joyously nuts" (Irish Examiner) trademark style.**

After the success of her record-breaking tour *The Prosecco Express*, Joanne McNally returns with her hotly anticipated new stand-up show *Pinotphile*.

Strictly 14yrs+

**7.30pm / £33.50**



## STEPHEN BAILEY: TART

FRI 19 SEP 2025

STUDIO

**Rising star Stephen Bailey returns to the stage!**

Stephen Bailey returns to the stage following the huge success of his sold-out 2024 tour with his brand-new live show. "A rising star" (The Sun), Stephen has appeared on every light entertainment show and come second on every celebrity quiz show.

Recommended 16yrs+

**8pm / £20.50**



## THE SECRET HISTORIES OF ANCIENT ROME WITH MARY BEARD

SUN 21 SEP 2025

MAIN HOUSE

**Step into the world of Ancient Rome with renowned historian Mary Beard as she uncovers the stories that history forgot.**

In this captivating live event, Mary Beard takes you beyond the well-worn paths of emperors and battles, revealing the rich and complex lives of those often left out of the history books.

**7.30pm / From £31**



## GEORGE LEWIS: THE BEST THING YOU'LL EVER DO

THU 2 OCT 2025

MAIN HOUSE

**'The funniest dad on Instagram', is bringing his brand-new show to the Marlowe Theatre stage.**

George has racked up hundreds of millions of views for his hilarious online sketches about the big things in life, like owning an air fryer. So, dump the kids, and join George for a brilliant night.

**7.30pm / £25**



## BJÖRN AGAIN

SAT 4 OCT 2025

MAIN HOUSE

**The only ABBA tribute band globally to have been endorsed by the original members of ABBA.**

Hailed the most successful tribute show of all time, the internationally acclaimed ABBA show tours the UK following their performances at Wilderness and Glastonbury.

**7.30pm / From £28**







## DESIREE BURCH: THE GOLDEN WRATH

FRI 10 OCT 2025  
STUDIO

The right voice for these  
very wrong times.

Always authentic, curious,  
and gleefully irascible,  
*Taskmaster* star Desiree  
Burch is the right voice for  
these very wrong times.

As seen on *Live at the Apollo*,  
*Taskmaster* and as the  
wisecracking narrator of  
Netflix's *Too Hot to Handle*.

8pm / £19



## GRAYSON PERRY: ARE YOU GOOD?

SUN 19 OCT 2025  
MAIN HOUSE

The Turner Prize-winning  
artist poses a question that  
they think is fundamental to  
our humanity.

*Are You Good?* In this show  
I will be helping you, the  
audience, find out if you  
really are thoroughly good  
or maybe quite evil, but  
in a fun way.

Recommended 18yrs+

7.30pm / From £32



## ANTON DU BEKE AT THE MUSICALS

SUN 16 NOV 2025  
MAIN HOUSE

Expect a fab-u-lous evening  
of song, dance and laughter.

*Strictly Come Dancing* legend  
and judge, Anton Du Beke,  
returns to the stage in 2025.

With his live band, guest  
singer and dancers, Anton  
will be performing songs  
and dances from some of  
his favourite musicals.

Expect a glamorous evening  
full of classics from West  
End and Broadway shows.

5pm / From £28



## RIA LINA: RIABELLION

FRI 17 OCT 2025  
STUDIO

Ria is back!

Expect a relentless stream of  
hilarity about the delight of  
throwing life up in the air after  
years of following the rules.  
Credits include *Live at the Apollo*,  
*Have I Got News For You?* and  
*The Last Leg*.

Recommended 16yrs+

Contains strong language

8pm / £20



## ALAN DAVIES: THINK AHEAD

FRI 21 NOV 2025  
MAIN HOUSE

On tour for the first time in a decade  
and funnier than ever!

Alan Davies is a critically-acclaimed  
actor, writer, and a staple of British  
television as well as one of the UK's  
best-loved comedians. Don't miss  
his brand new tour.

Recommended 12yrs+

7.30pm / £32.50



## JEN BRISTER: REACTIVE

WED 19 NOV 2025  
MAIN HOUSE

The "furiously funny"  
(*The Guardian*) stand-up comedian  
and writer is back on the road with  
her brand-new show.

Jen Brister is *Reactive* – or so  
she has been told. She finds  
herself in a constant state of  
exacerbation at the state of  
the world and people in general.  
Can she find her zen? It seems  
unlikely to be honest...

Recommended 18yrs+

Contains strong language

7.30pm / £28



## CHRIS MCCAUSLAND: YONKS!

THU 15 JAN 2026  
MAIN HOUSE

Chris is back with another  
masterclass in stand-up.

You might have seen him on  
*Strictly Come Dancing*, *Would I Lie  
to You* and *Have I Got News For  
You*. He's been called an "overnight  
success" – even though he's been  
doing this for yonks!

Recommended 16yrs+

7.30pm / £33.50



## ROSS NOBLE: CRANIUM OF CURIOSITIES

TUE 10 MAR 2026  
MAIN HOUSE

Ross Noble is the *Wizard of Waffle*,  
*The Rambler Royale*, *The Noodlers'*  
*Noodler*, and he's back live on stage  
to tour a tornado of tangents.

What the show will be about is  
anybody's guess, but that's all part  
of the fun when you look inside  
his *Cranium of Curiosities*.

Recommended 15yrs+

7.30pm / £33.50





## THE ETERNAL SHAME OF SUE PERKINS

SUN 8 MAR 2026  
MAIN HOUSE

In her first live show in over a decade, Sue delivers a hilarious treatise on stigma, humiliation, and misunderstanding.

You may know her as *Bake-Off Sue*, *Taskmaster Sue*, *Just A Minute Sue*, or the Sue that gives you travel envy - but stand-up Sue is full of surprises. In this brand-new show, she shares the unlikely happenings from a career in the spotlight.

Recommended 16yrs+

7.30pm / £32



## SARA PASCOE: I AM A STRANGE GLOOP

THU 12 MAR 2026  
MAIN HOUSE

Join Sara for a "gloriously funny" (Evening Standard), "charming and open-hearted" (The Guardian) evening of comedy.

Have you ever been awake in the middle of the night and thought something so smart and astute that you couldn't wait for the world to wake up so you could tell them?

This show is that thought.

In that it doesn't make much sense and is a bit weird on reflection.

Recommended 14yrs+  
Contains strong language

7.30pm / £29



## BACKSTAGE TOURS

Learn about life backstage.

Enjoy a fun and informative 90 minute tour of our theatre led by Marlowe Theatre staff members where you can learn all about life backstage.

Dates:

Sat 24 May 2025

Fri 27 Jun 2025

Fri 25 Jul 2025

Fri 5 Sep 2025

Standard ticket:

£12.50

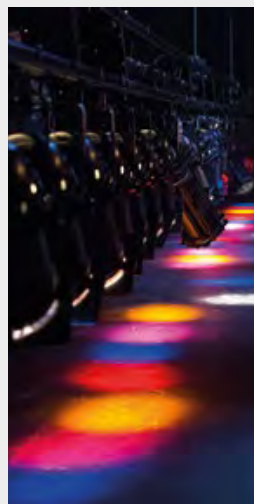
£8 Marlowe members

Ticket including cake and coffee:

£18

£13.50 Marlowe members

Find out more at [marlowetheatre.com](http://marlowetheatre.com)



## MARLOWE THEATRE YOUTH COMPANY BURSARY

Providing financial assistance for dedicated and passionate young people to join our Youth Company.

The Marlowe Theatre Youth Company provides young people with life-enhancing opportunities to express themselves, boost their confidence, and develop skills in performing, in a fun, inclusive and friendly environment.

The Marlowe Theatre Bursary Award offers places in the company for young people between the ages of 7 and 17 living in Kent who are interested in joining, but for whom cost would be a barrier.

For further information and to see if you are eligible please find out more at [marlowetheatre.com](http://marlowetheatre.com)

## MARLOWE THEATRE ARTISTS' NETWORK

The Marlowe Theatre Artists' Network is a community for artists and theatre-makers of all backgrounds, disciplines and levels of experience.

Membership is free and open to everyone. If you think of yourself as an artist or theatre-maker - whether you write, make, direct, perform, produce or something else - then this network is for you. Hundreds of local artists are already involved, and the group is growing all the time.

Members are invited to regular events at the Marlowe Theatre, and they keep the conversations going throughout the year in our online hub. They have access to artist and professional development opportunities, including our first mentoring scheme which began earlier this year.



Find out more and sign up on our website



# TICKETING, OFFERS & ACCESSIBILITY

## Booking your ticket

Tickets can be booked online at [marlowetheatre.com](http://marlowetheatre.com), by calling our Box Office on **01227 787787** (Mon-Sat 10am-5pm), or by visiting the theatre in person.

## Discounts\*

Explore our range of discounts at [marlowetheatre.com/memberships](http://marlowetheatre.com/memberships)



### Marlowe Members

Our members get priority booking and exclusive discounts. Join today from as little as £41.



### Discovery Tickets

16-26-year-olds can see a range of high-quality productions for just £10.



### Group bookings

Book as a group of at least 10 people, and save up to 15% on your tickets.



### Schools

We also offer schools generous discounts on selected productions and performances.



### Under 16's

We offer people under 16 discounts on selected productions and performances.

## Terms and conditions

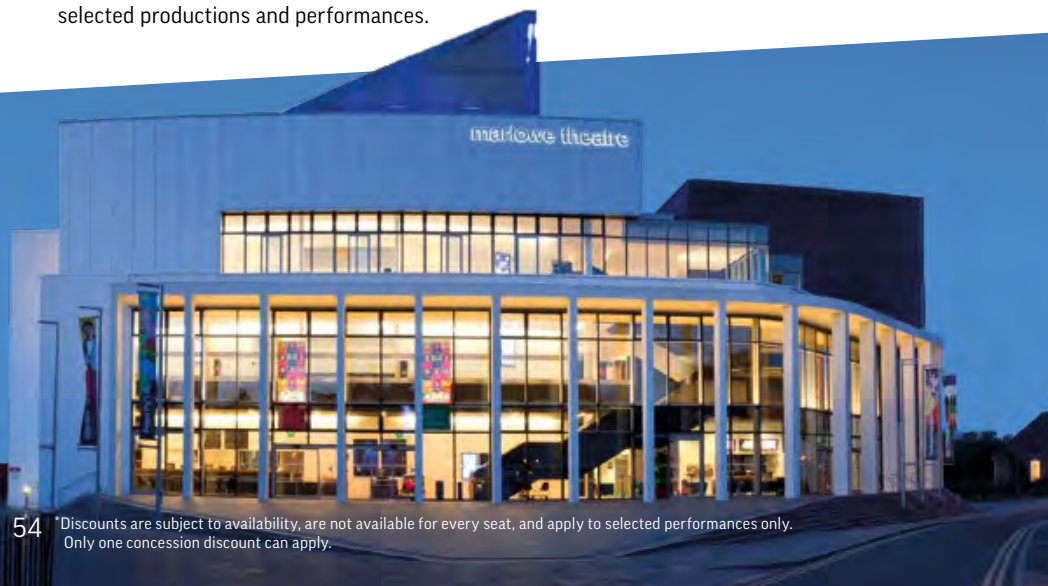
Tickets are sold subject to the right of the Marlowe Theatre and/or the visiting producer to alter or vary the advertised programme due to events or circumstances beyond our control. Prices are subject to change and alteration. For current ticket prices please visit our website.

We do not offer refunds unless a show is cancelled. However, tickets can be exchanged at our discretion for an alternative performance within the same run, subject to availability and up to five days before the performance. A fee will apply for this service.

## Privacy policy

We take the protection of your data very seriously and we want you to receive communications from us that are informative and helpful. To read our privacy policy, visit our website.

If you have any questions or comments, please email us at [info@marlowetheatre.com](mailto:info@marlowetheatre.com).



**We want the Marlowe Theatre to be enjoyed by everyone. We have a range of accessible facilities and events to support your visit:**



Up to 10 **wheelchair** positions available over all three levels of our Main Space and up to six wheelchair spaces in our Studio.

**Lift access** to every floor. Please let our Box Office know if you are unable to use the stairs, so we can arrange a plan for you in the event of an evacuation.



Our **hearing loop system** uses radio frequencies to amplify sound from the stage. Personal induction loops are available for use with a hearing aid, and for those who do not wear a hearing aid or do not have the telecoil (T) setting, headphones are available.



**Assistance dogs** are welcome at our theatre. If you would like to bring your dog into the show, please contact our Box Office to find the best seating. If you need a dog-sitter, please get in touch at least one day in advance of your visit.



We offer a limited number of **Blue Badge parking spaces**, mobility scooter parking and a drop-off point with step-free access to the main foyer. Please contact our Box Office team at least one day in advance of your booking if you need to gain vehicle access to our theatre and see our website for more information.

## Accessible performances

We offer four types of accessible performance. Look out for these symbols:



### Audio Described Performances

Live commentary of our shows is available via a personal headset. This service aims to bring theatre to life for our blind and partially sighted audience members.



### British Sign-Language Interpreted Performances

An interpreter stands on or aside the stage and interprets the spoken word and sound effects for Deaf customers who use BSL.



### Captioned Performances

Subtitles are displayed on large screens, usually either side of the stage.



### Relaxed Performances

A relaxed and inclusive atmosphere where everybody can enjoy the show the way they need to, with helpful changes made to the show and auditorium to make it more accessible for sensory and communication needs.

**Anything missing?** If there is anything else we can do to improve your visit, please contact us on **01227 787787** or email [boxoffice@marlowetheatre.com](mailto:boxoffice@marlowetheatre.com).



# SUPPORT US

## Why support us?

The Marlowe Theatre is an independent theatre run by a charitable trust (charity no. 1179882). We receive no public subsidy and invest all our profits back into the theatre.

The Marlowe Theatre is Kent's engine house for the performing arts and with your support, we will continue to bring world-class theatre to Canterbury and create work with young people, the communities of Kent and with regional, and national, artists. We would like to thank all the individuals, grant funders and companies who support the Marlowe Theatre'.

### Marlowe Theatre members

#### Creative Circle

Wendi Atherton  
Sir Roger and  
Lady De Haan  
Lyvie De Haan  
Heather and  
Antonia Hardy  
Mark and Liza Loveday  
Roger and Claire O'Shea  
Sir Graeme Odgers  
Richard and  
Amicia Oldfield  
Riki and Sara Samuel  
Mr Stephen Surridge  
Frazer and Sue  
Thompson

#### Benefactors

Kathy and Paul Dacre  
David and Julia Harrel  
Paul and Joy Roberts  
David Elvin and  
Helen Shilling  
**Superstars**  
Alex and Kathie  
Child Villiers  
Bernard Hide  
Mr and Mrs  
Iain Johnstone  
Mrs Glenese Knott  
Dee Primett  
James and Jane Loudon  
Anthony Ralph  
The Lady Juliet Tadgell  
Linda and Flavio Walker

Nina and Graham  
Williams

Andrew and  
Phacharee Wills

#### Champions

Paul and Patricia Barrett  
Elaine and Chris Busby  
Robbie Cragg  
Colin and Siobhan  
Creedy  
Mr Philip Cross  
Mr Robert and Mrs  
Lida de Fougerolles  
Jane Edred Wright  
Carol Freedman and  
Martyn Crosswell  
The Golesworthy  
Family

Mr and Mrs  
Adrian Gulvin  
Andrew and  
Rosmarie Hall  
Jade Howard  
Sarah and Ian Kemsley  
Lady Kingsdown  
Kate McGranaghan Chow  
Richard and  
Rogy Nelson  
Mr Justin O'Hara  
Ian and Juliet Odgers  
Mrs Sharon Reed  
Ms Francesca Richards  
Mrs Fiona Sunley  
Mr Steven Way  
George Wheeler  
Sarah Wildgoose  
Peter and Jo Williams

### Grant funders

Support from statutory bodies, charitable trusts and foundations helps Marlowe Theatre fund essential capital works, learning and participation, outreach and artistic programming.



The Pilgrim Trust

Samuel Feldman  
North East Corner  
Charitable Trust



The Wolfson\*  
Foundation

The Hardy  
Family Foundation

# SUPPORT US

## Corporate supporters

Businesses of all sizes and industry can benefit from a relationship with the Marlowe Theatre, enjoying increased brand profile, staff engagement and client hospitality opportunities, among other attractive rights and benefits.

### Partners



### Sponsors



### Business members

ABode  
ASC Finance For Business  
Barclays  
Burgess Hodgson  
Canterbury BID  
Canterbury Christ Church  
University  
Dads Unlimited  
DigitalBeans  
East Kent Colleges Group  
Friendly Socials  
Furley Page  
Hampton By Hilton  
Handelsbanken  
Holiday Extras  
Hornby Hobbies

IMP Studio & Live  
J&J Systems Ltd  
Jackwood Travel  
Kreston Reeves  
London Institute of  
Banking & Finance  
Martin & Co  
Merit Professional Services  
NFU Mutual Canterbury &  
Sittingbourne  
o-a-sys  
Parkers Design & Print  
Paul Roberts Canterbury  
Pharon Independent Financial  
Advisers  
Pho

Porchlight  
PSM Recruitment  
Redfortress Ltd  
Romax  
Socialite  
Sternberg Reed Solicitors  
Stowe Family Law  
The Caldecott Foundation  
The Corner House  
The King's School Canterbury  
University of Kent  
Walker Construction  
Westgate Hall  
Whitehead Monckton  
Wing Kingz

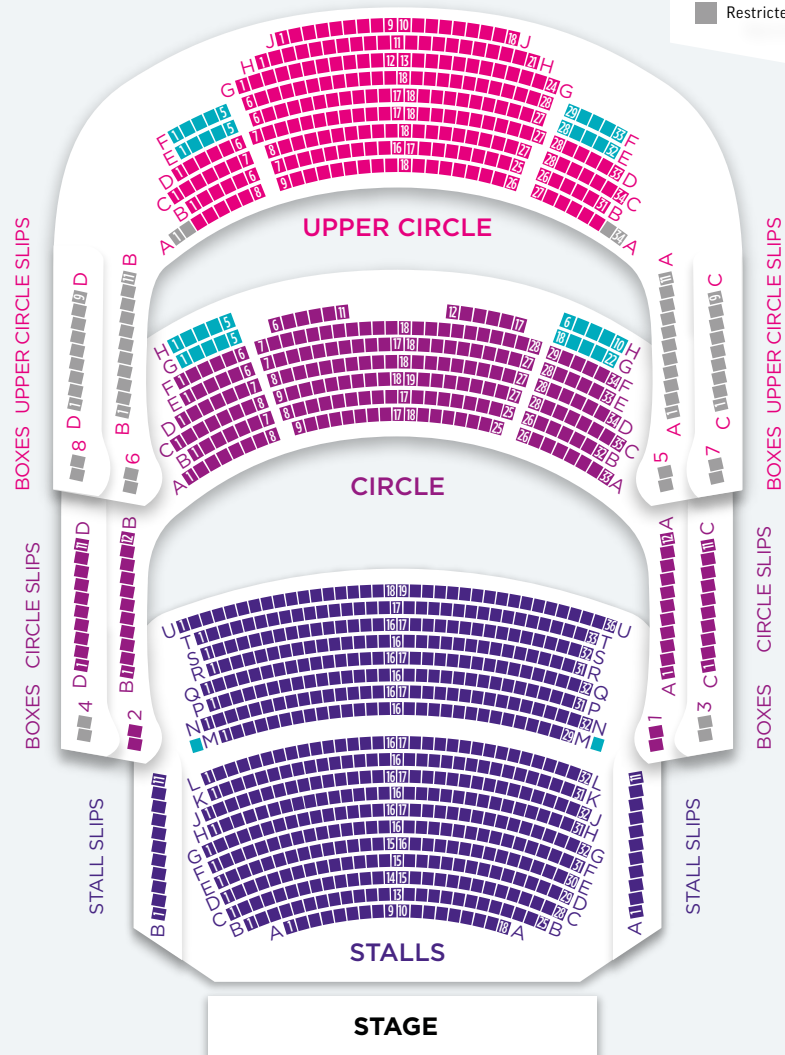
To find out more about a relationship with the Marlowe Theatre please contact:

**Khost Howard, Development Officer (Corporate & Events)**  
khost.howard@marlowetheatre.com 01227 935363

# SEATING PLAN MAIN HOUSE

## Access key

- Wheelchair positions (book in person or over the phone)
- Restricted view



# SEASON DIARY SUMMER 2025

- MAIN HOUSE
- STUDIO

|   |  |   |  |
|---|--|---|--|
| ABI CLARKE: ROLE MODEL<br>SAT 19 APR 2025   | CALAMITY JANE<br>TUE 27-SAT 31 MAY 2025                                      | LONDON SYMPHONIC ROCK ORCHESTRA<br>THU 24 & FRI 25 JUL 2025             | FIDDLER ON THE ROOF<br>TUE 11-SAT 15 NOV 2025                      |
| ENGLISH TOURING OPERA<br>MON 21-WED 23 APR 2025   | NICK MOHAMMED IS MR. SWALLOW: SHOW PONY<br>SUN 1 JUN 2025                    | BAT OUT OF HELL<br>TUE 29 JUL-SAT 2 AUG 2025                            | ANTON DU BEKE AT THE MUSICALS<br>SUN 16 NOV 2025                   |
| SCIENCE MUSEUM LIVE<br>MON 21 APR 2025  | RUSSELL KANE: HYPERACTIVE<br>MON 2 & TUE 3 JUN 2025                          | DINOSAUR WORLD LIVE<br>FRI 15-SUN 17 AUG 2025                           | BALLET BLACK: SHADOWS<br>TUE 18 NOV 2025                           |
| SOUNDS OF THE 60'S LIVE: HOSTED BY TONY BLACKBURN OBE<br>TUE 22 APR 2025  | PIG HEART BOY<br>WED 4-SAT 7 JUN 2025  | THE ADDAMS FAMILY<br>TUE 19-SAT 23 AUG 2025                             | JEN BRISTER: REACTIVE<br>WED 19 NOV 2025                           |
| HENNING WEHN: ACID WEHN<br>THU 24 APR 2025  | CHRIS HADFIELD: A JOURNEY INTO THE COSMOS<br>SUN 8 JUN 2025                  | THE PARTY GIRLS<br>MON 1-SAT 6 SEP 2025                                 | ALAN DAVIES: THINK AHEAD<br>FRI 21 NOV 2025                        |
| PHILHARMONIA ORCHESTRA<br>FRI 25 APR, TUE 20 MAY, MON 29 SEP, THU 18 DEC 2025 & SUN 18 JAN, WED 11 MAR, SUN 17 MAY 2026 | KINKY BOOTS<br>TUE 10-SAT 14 JUN 2025  | JOSH WIDDICOMBE: NOT MY CUP OF TEA<br>SUN 14 & MON 15 SEP 2025          | SNOW WHITE AND THE SEVEN DWARFS<br>FRI 28 NOV 2025-SUN 11 JAN 2026 |
| LIVE AT THE MARLOWE<br>SAT 26 APR, FRI 20 JUN, SAT 26 JUL & THU 20 NOV 2025   | MICHAEL AKADIRI: TRUST ME I'M A DADDY<br>FRI 13 JUN 2025                     | CIRQUE ÉLOIZE: ID RELOADED<br>FRI 19 & SAT 20 SEP 2025                  | CHRIS MCCAUSLAND: YONKS!<br>THU 15 JAN 2026                        |
| MATTHEW BOURNE'S SWAN LAKE<br>TUE 29 APR-SAT 3 MAY 2025   | DIANNE & VITO: RED HOT AND READY<br>SUN 15 JUN 2025                          | STEPHEN BAILEY: TART<br>FRI 19 SEP 2025                                 | DEATH ON THE NILE<br>TUE 20-SAT 24 JAN 2026                        |
| DIONNE WARWICK: DON'T MAKE ME OVER<br>MON 5 MAY 2025  | TOM GATES EPIC STAGE SHOW<br>SAT 21 JUN 2025                                 | THE SECRET HISTORIES OF ANCIENT ROME WITH MARY BEARD<br>SUN 21 SEP 2025 | SUNNY AFTERNOON<br>TUE 3-SAT 7 FEB 2026                            |
| PRIDE AND PREJUDICE (*SORT OF)<br>TUE 6-SAT 10 MAY 2025   | BOYS FROM THE BLACKSTUFF<br>TUE 24-SAT 28 JUN 2025                           | UNCANNY: FEAR OF THE DARK<br>TUE 30 SEP 2025                            | CHRISTMAS CAROL GOES WRONG<br>TUE 24-SUN 1 MAR 2026                |
| CHICAGO<br>MON 12-SAT 17 MAY 2025   | JIMMY CARR: LAUGHS FUNNY<br>FRI 4 & SAT 5 JUL 2025                           | JOANNE MCNALLY: PINOTPHILE<br>WED 1 OCT 2025                            | PRIMA FACIE<br>TUE 3-SAT 7 MAR 2026                                |
| THE ALTERNATIVE COMEDY SHOW<br>THU 15 MAY, THU 12 JUN, WED 17 SEP 2025  | ALEX KEALY: THE FEAR<br>FRI 4 JUL 2025                                       | GEORGE LEWIS: THE BEST THING YOU'LL EVER DO<br>THU 2 OCT 2025           | THE ETERNAL SHAME OF SUE PERKINS<br>SUN 8 MAR 2026                 |
| JAKE LAMBERT: THE SUNSHINE KID<br>FRI 16 & SAT 17 MAY 2025  | EDINBURGH COMEDY PREVIEWS<br>SAT 5, SAT 12 & SAT 19 JUL 2025                 | RHOD GILBERT AND THE GIANT GRAPEFRUIT<br>FRI 3 OCT 2025                 | ROSS NOBLE: CRANIUM OF CURIOSITIES<br>TUE 10 MAR 2026              |
| ROB BECKETT: GIRAFFE<br>SUN 18 & MON 19 MAY 2025  | THE ROCKY HORROR SHOW<br>MON 7-SAT 12 JUL 2025                               | BJÖRN AGAIN<br>SAT 4 OCT 2025   | SARA PASCOE: I AM A STRANGE GLOOP<br>THU 12 MAR 2026               |
| NIKITA KUZMIN: MIDNIGHT DANCER<br>WED 21 MAY 2025   | GUENTHER STEINER: UNFILTERED LIVE<br>SUN 13 JUL 2025                         | DEAR ENGLAND<br>TUE 7-SAT 18 OCT 2025                                   | TO KILL A MOCKINGBIRD<br>TUE 17-SAT 21 MAR 2026                    |
| DARA Ó BRIAIN: RE:CREATION<br>THU 22 & FRI 23 MAY 2025  | THE LION, THE WITCH AND THE WARDROBE<br>TUE 15-SAT 19 JUL 2025               | DESIREE BURCH: THE GOLDEN WRATH<br>FRI 10 OCT 2025                      | MATTHEW BOURNE'S THE RED SHOES<br>TUE 31 MAR-SAT 4 APR 2026        |
| OMID DJALILI: NAMASTE<br>SAT 24 MAY 2025  | JOOLS HOLLAND AND HIS RHYTHM AND BLUES ORCHESTRA<br>SUN 20 & MON 21 JUL 2025 | RIA LINA: RIABELLION<br>FRI 17 OCT 2025                                 | HAMLET<br>TUE 21-SAT 25 APR 2026                                   |
| ALJAZ & JANETTE: A NIGHT TO REMEMBER<br>SUN 25 MAY 2025   | CIRQUE: THE GREATEST SHOW - REIMAGINED<br>TUE 22 & WED 23 JUL 2025           | GRAYSON PERRY: ARE YOU GOOD?<br>SUN 19 OCT 2025                         | HERE & NOW<br>TUE 12-SAT 16 MAY 2026                               |
|   |  | TOP HAT<br>TUE 21-SAT 25 OCT 2025                                       | PRISCILLA QUEEN OF THE DESERT<br>MON 25-SAT 30 MAY 2026            |
|   |  | TINA - THE TINA TURNER MUSICAL<br>TUE 28 OCT-SAT 8 NOV 2025             | FAWLTY TOWERS THE PLAY<br>TUE 21-SAT 25 JUL 2026                   |

# SEATING PLAN STUDIO

The Studio (on the first floor at the Marlowe Theatre) is a flexible space, in which the layout will change depending on the event. To find out more about the seating layout for a particular production, please visit our website or phone our Box Office team.

## Become a Friend

As a member, you get priority booking for shows as well as a host of other benefits, all for as little as £41. Visit [marlowetheatre.com/memberships](http://marlowetheatre.com/memberships).

## Booking opens (for new shows):

- 25 MAR Creative Circle, Benefactor, Superstar members
- 26 MAR Champion members
- 27 MAR Supporter and Friends Extra members
- 31 MAR Friend members
- 7 APR General public



The Friars  
Canterbury  
Kent CT1 2AS

Box Office: 01227 787787  
[marlowetheatre.com](http://marlowetheatre.com)

  @marlowetheatre  
 [themarlowetheatre](https://www.facebook.com/themarlowetheatre)

Marlowe Theatre is proud to be supported by:



**canterbury**  
city council



Designed by Cog