

Kindler

Inclusive Resource Pack



By Smoking Apples Theatre



Supported using public funding by
**ARTS COUNCIL
ENGLAND**

**SMOKING
APPLES**

ENTERPRISE ARTS TRUST

Introduction

This is **Babi** and she is the main character in *Kinder*.

Kinder was made by Smoking Apples, a puppetry and visual theatre company.

Here's a sneak peek of what you will see in the show.



Set

During Kinder, you will sit inside the set of the show.

It is interactive and the show will happen around you.

Here are some pictures to help you understand what this experience will be like:



This is the entrance to the set.

You can see the stools inside, this is where you will sit.



Set



When you enter, there is a box of fidget toys and ear defenders.

You can choose to pick these up at the start of the show, or at any point during it.

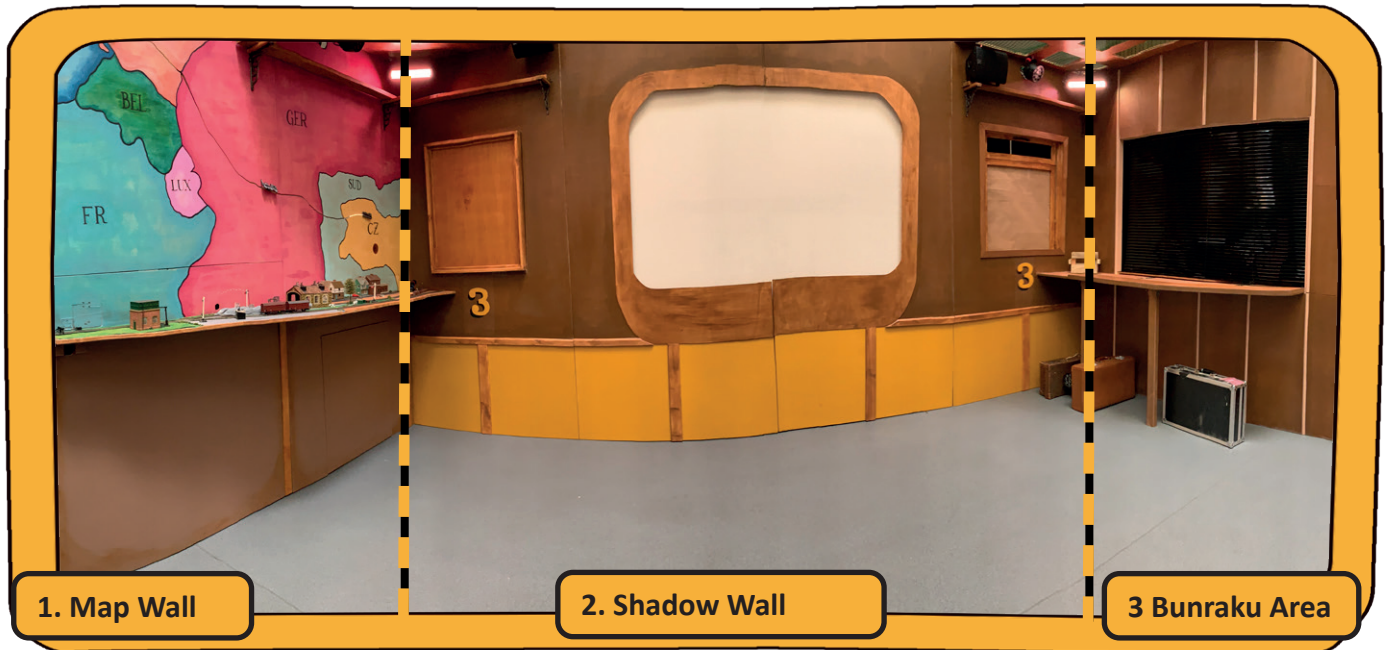


You can also choose to leave and reenter the performance at any time.

Outside the set, there is a chill out space with bean bags in. You can go here at any time.

Set

This is what you will see, as the audience.



1. Map Wall

2. Shadow Wall

3 Bunraku Area



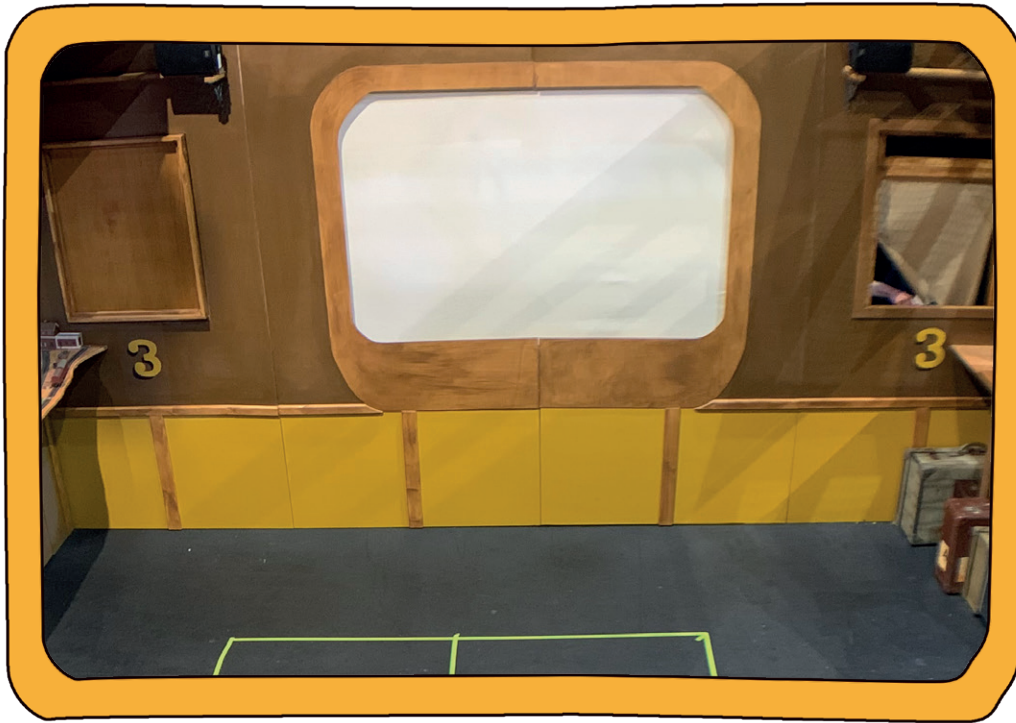
1. Map Wall

To your left, there is a wall with a map on it, and a model train railway.

The train moves at certain points in the show.

The door underneath the railway opens and closes.

Set



2. Shadow Wall

In front of you, there is a wall with a shadow screen in the centre.

There are two hatches on either side. These open and close.



3. Bunraku Area

To your right, there is a large window that will open and close.

This is where you will see the table top puppets.

Station signs are also displayed here and there is a gold 'push' button.



Tips and Hints

You might not have experienced a show like Kinder before.

Here are some tips and hints to help you have the best time.



Interactivity:

This is an interactive show. You can choose to push things, hold things and pass things.

Please feel free to respond to this and look out for the gold button.

Sometimes the characters might speak to you or ask you to help them with something, don't be shy!

Trigger Warnings:

There are moments of darkness in Kinder.

At times, there will be short loud and sudden noises.

Kinder is set at a time of war, so there are references to fighting, violence and aggression.

Remember you can choose to pick up ear defenders, or to leave the space at any time.

Characters



This is Babi, her real name is Barbora. In the show, you see her as a 9 year old girl and as a 70 year old woman. She is Jewish, this is a religion. Whenever you see her, she is wearing a yellow scarf.

Babi



This is Sammy, his full name is Samuel but he hates being called this.

He is Babi's Grandson.

Sammy

Characters



This is Mrs Gumpster and her sausage dog, Klaus.

Babi meets her in Germany, on her way to England.

Mrs Gumpster and Klaus



This is a German Soldier. Babi meets him on the train, in Germany, on her way to England.

German Soldier

Characters



This is Mrs Walker.
She looks after Babi
when she comes to
England.
She is her foster Mum
and mostly, you only
see her legs and feet.
She wears red shoes.

Mrs Walker



Others

There are many other
characters that I meet on my
journey, some of them are
nice, some of them are not.



Narrative

At the start and end of the show, there will be darkness.

Unexpected things pop out of windows and hatches and holes in the set.

Words are used throughout but different languages are spoken, it is okay if you do not understand them.

At points there are some loud noises and banging on the set, you might feel scared but that is part of the story.



Kinder watches Babi explore her hometown of Prague, with her Grandson, Sammy.

Narrative

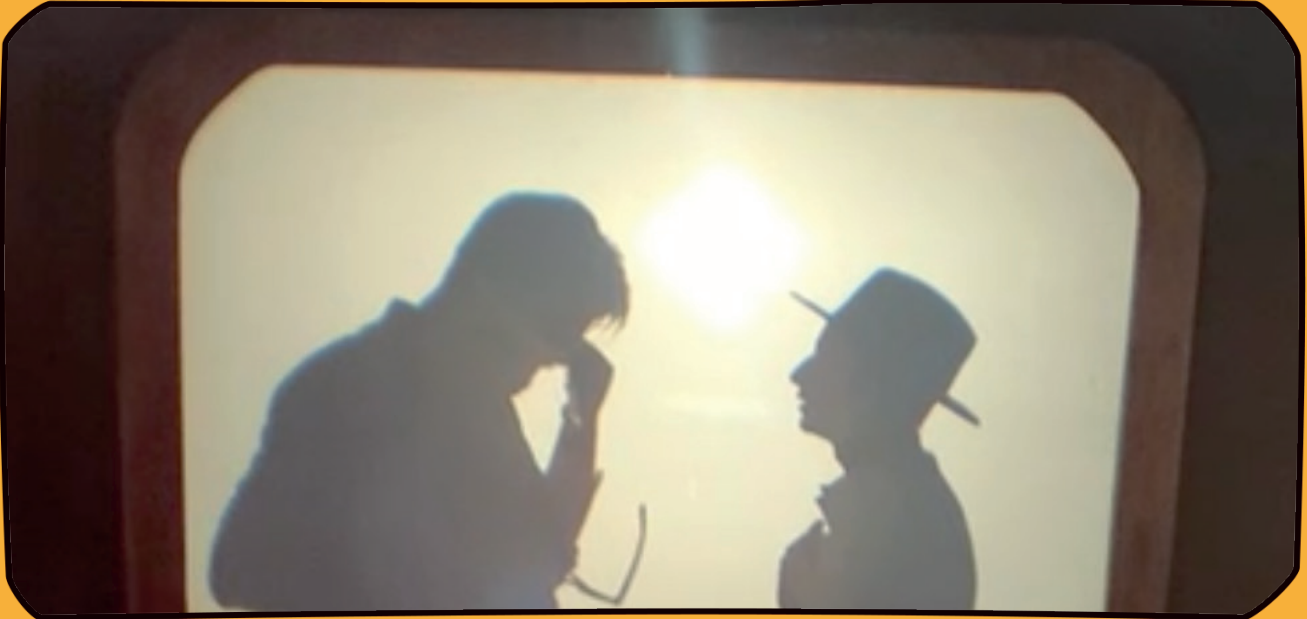


She remembers how she travelled from Prague to England. During the show we move between the present day, and her memories.

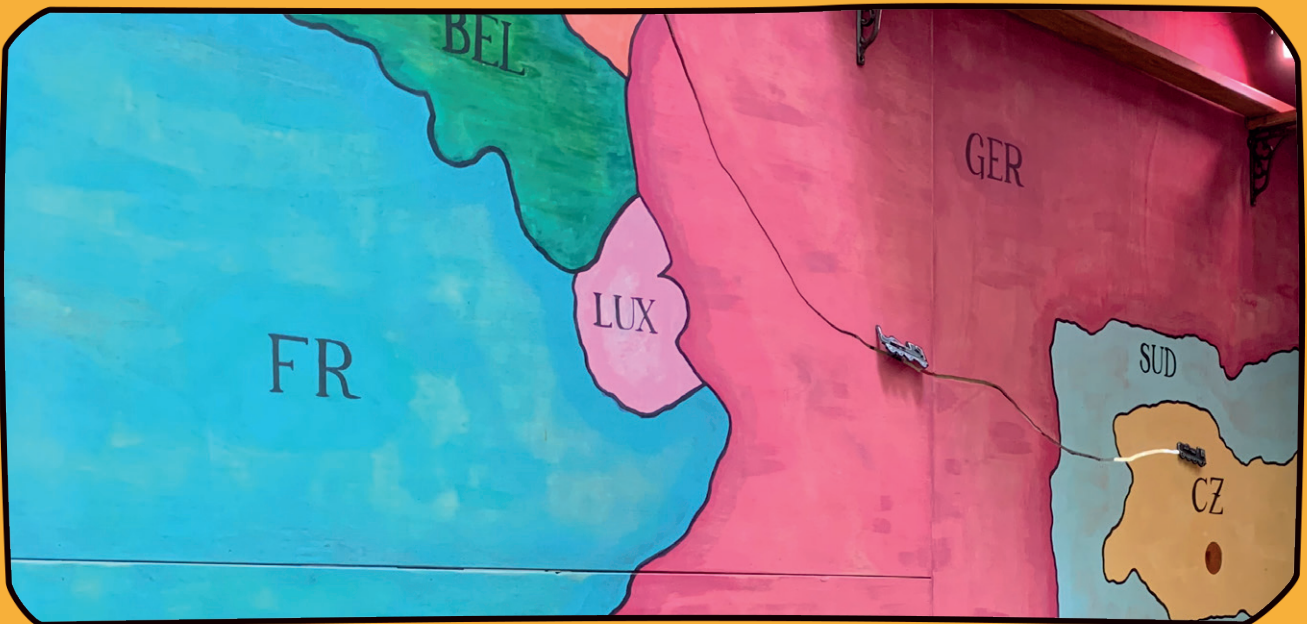


Babi had to leave Prague because Jewish people were not safe. This was just before the Second World War started. 669 children were evacuated from Prague to England, on a train, to protect them from Nazi persecution.

Narrative



In the show, we see Babi's Dad meeting with a British man called Nicholas Winton. He arranges for her to travel safely to Margate.



On the train, she travels from Czechoslovakia, into Germany, then Holland, and on to the UK.

Narrative

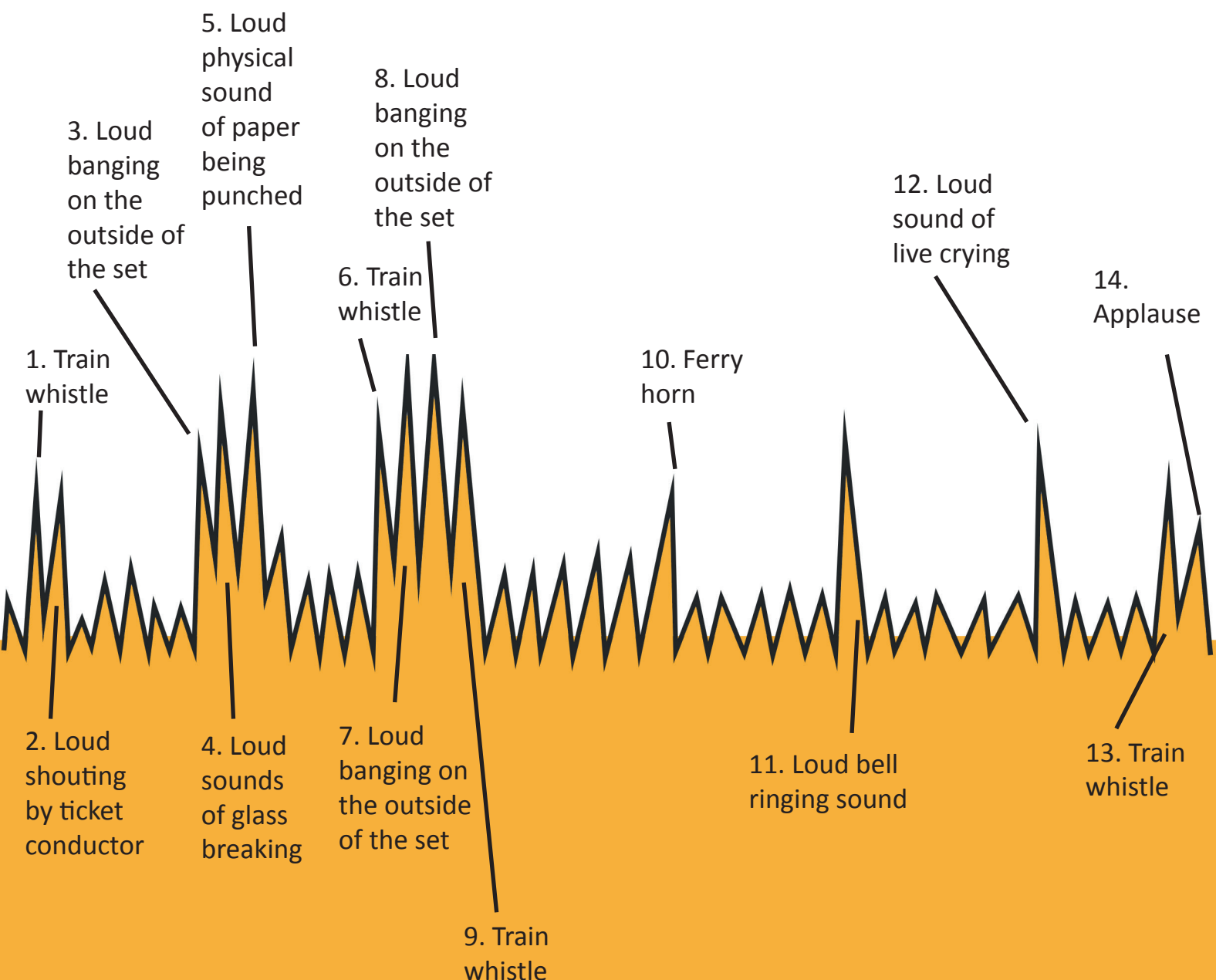


In the present day, Babi and Sammy travel around Prague. Their relationship improves as they come to understand the importance of their shared history.

Sonic Story

Sound and audio is an important part of the storytelling in Kinder and it plays consistently throughout the show. The sound is made up of music, sound effects, recorded voices and live dialogue.

The picture below shows you where loud or sudden sounds happen during the show. There are no other loud or sudden noises and no moments of complete silence.



Puppetry

In Kinder you will see different types of puppets.

Puppets are objects that are animated and manipulated by the puppeteers, to bring them to life.

You will see 3 puppeteers during the show and sometimes you will see their face, arms and hands, when they are using the puppets.



Sometimes the puppeteers work alone, like on the left.



Sometimes they work together, like on the right.

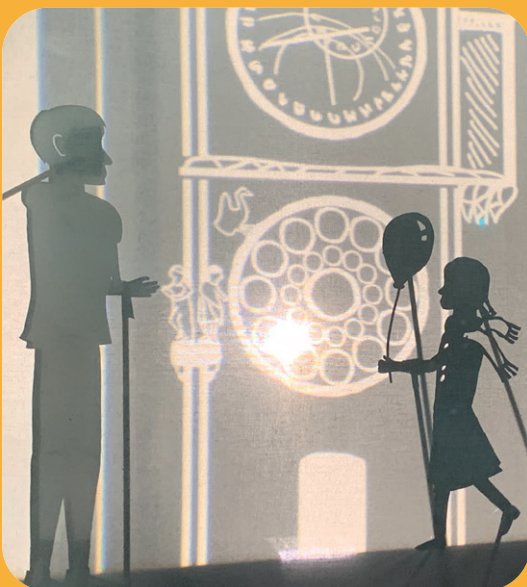
Puppetry

We use two main types of puppetry in Kinder; table-top puppets and shadow puppets.



Table top puppets are small, human-like models.

They are three dimensional, like me!



Shadow puppetry is operated from behind a screen.

They look two dimensional, like moving pictures.

Things to think about

What is a refugee?

A refugee is someone who has been forced to leave their country to escape war or persecution, or both. They cannot go home until it is safe for them again.

Why is it relevant now?

Over the past few years, millions of people have had to flee their countries including Syria, Afghanistan and Ukraine due to conflict ruining their homes and posing dangers to their lives.

Please visit www.rescue-uk.org, www.refugee-action.org.uk or www.redcross.org.uk for more information about the current crisis.

How to be a critical audience member

Sometimes as an audience member, you may just want to sit back and enjoy the show, but at other times, you may want to have more to do or think about. Here are some questions you could choose to think about during the show:

> How does Babi **feel** when she travels to **Prague**?

> In Babi's past, how does she **feel** during her journey to the **UK**?

> What do you think are the most **significant** objects in the story?

> Why are some parts of the story shown using **table-top puppets**, and other parts shown using **shadow puppets**?

> How does Babi **feel** at the **end** of the story?



General Info

Who are Smoking Apples?

Smoking Apples are a theatre company who develop and deliver innovative puppetry and visual theatre, workshops and design services of the highest quality to people and places.

We work with complex subject matter to make visually stunning, enjoyable theatre that holds audiences and artists at the heart of our work.

Get in touch

You can contact us via our website:

www.smokingapplestheatre.com/contact

Or on social media on:



Facebook: @smokingapplestheatre



Instagram: @smokingapplestheatre



Twitter: @smokingapplesth

This show has been supported by:

- Arts Council England
- Enterprise Arts Trust
- E M Forster Theatre
- Little Angel Theatre
- Harrogate Theatre
- National Holocaust Centre
- Harwich Festival

We hope you enjoy the show.

You are welcome to write some feedback on one of the luggage tags we provide at the end of the show.

